

Ecoside 100



Rectangular litter bin composed of a supporting structure in steel tube, a stainless steel sheet covering with rain cover, a front door, drop-down opening with gas pistons, equipped with bag holder ring with elastic and snap lock. The litter bins can be placed side by side to create islands for separate collection.

Variant code: 0025020

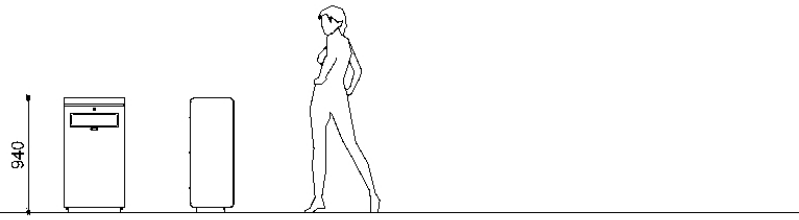
Finishes: Brushed stainless steel

Size and weight: Width 490mm
Length 368mm
Height 942mm
Weight 38kg
Capacity 100lt

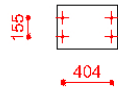
Fixing: Pre-drilled for anchors

Materials: Stainless steel

Technical drawing:



Ground fixings



metalco.it
info@metalco.it



STAINLESS STEEL

For our stainless steel products and components, we normally use AISI 304 or 304L stainless steel, but in case of installation in highly aggressive conditions we recommend requesting AISI 316 stainless steel.

Our stainless steel is usually brushed or shotblasted, depending on the technical features of the product.

Electropolishing treatment is also available, upon request.



BRUSHED



SHOTBLASTED

