

Gavitello



Litter bin made of HPC (High Performance Concrete) velluto - natural smooth with stainless steel opening lid with central hole and lock and equipped with a bag holder ring along the internal circumference.

Variant code: 0025231

Size and weight: Height 920mm
Weight 400kg
Diameter 678mm
Capacity 85lt

Materials: Structure: HPC (High Performance Concrete)

Lid: stainless steel

Bag holder ring: Steel treated with protective coating

Finishes: HPC velluto - natural smooth

Brushed stainless steel

Steel: Steel treated with protective coating

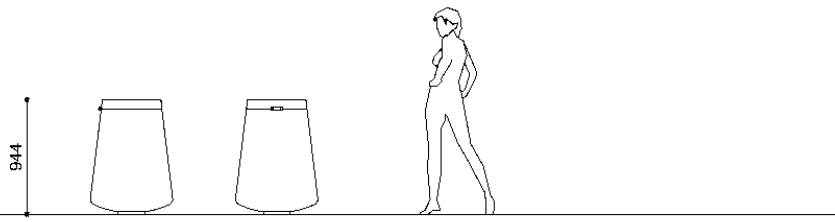
Color:

HPC colour to be chosen between grey, white and dark grey.

Finishes:

Fixing: Pre-drilled for anchors

Technical drawing:



680

Ground fixings



metalco.it
info@metalco.it



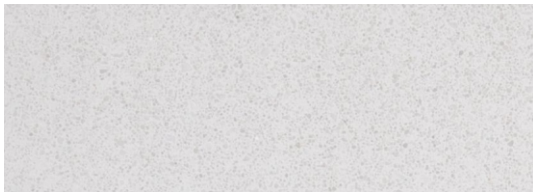
HPC (HIGH PERFORMANCE CONCRETE)

Our HPC is available in five different colors (white, grey, dark grey, green and yellow) and it is provided, as standard, with VELLUTO – natural smooth finish.

Characterized by textured appearance, HPC can present not uniform cloudy effects of color and light cracks, which are physiological aspects of this material.

Upon request, when technically feasible, it is possible to perform polishing operations.

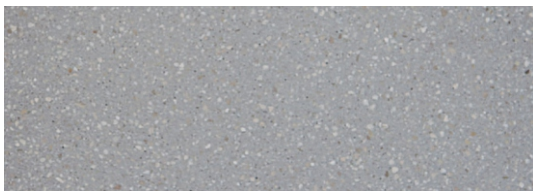
The finished products are treated with a protective varnish, and upon request, anti-graffiti treatment can be also applied.



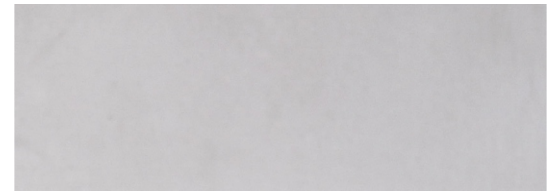
WHITE POLISHED



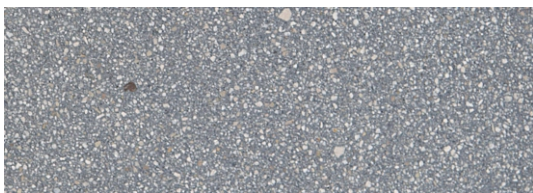
WHITE VELLUTO - NATURAL SMOOTH



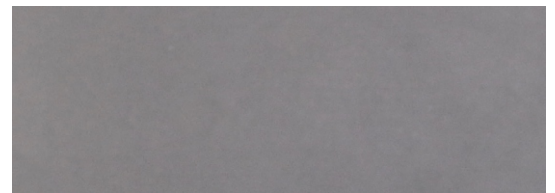
GREY POLISHED



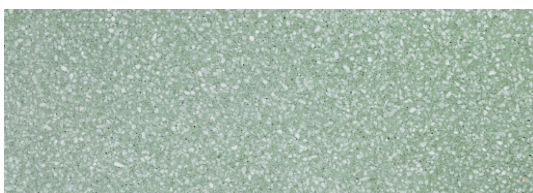
GREY VELLUTO - NATURAL SMOOTH



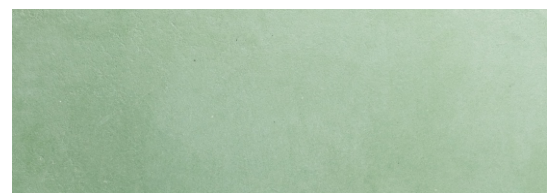
DARK GREY POLISHED



DARK GREY VELLUTO - NATURAL SMOOTH



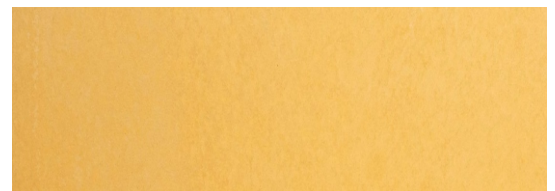
GREEN POLISHED



GREEN - NATURAL SMOOTH



YELLOW POLISHED



YELLOW VELLUTO - NATURAL SMOOTH

N.B.: Please note that the images reproduced on these pages are purely indicative. For more information about the materials, visit our website

metalco.it
info@metalco.it

