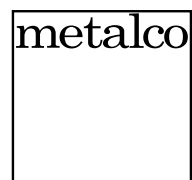


Diorite

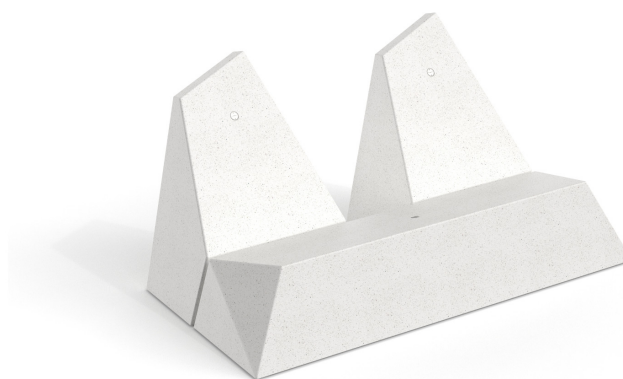


Collection of monolithic diamond-shaped benches made of PDM (Reconstituted Stone) with granite or marble aggregates and sandblasted finish. Available in flat version, with one or two short backrests, with a long backrest on the right or left side, and with two opposite backrests.

metalco.it
info@metalco.it



Diorite 2s



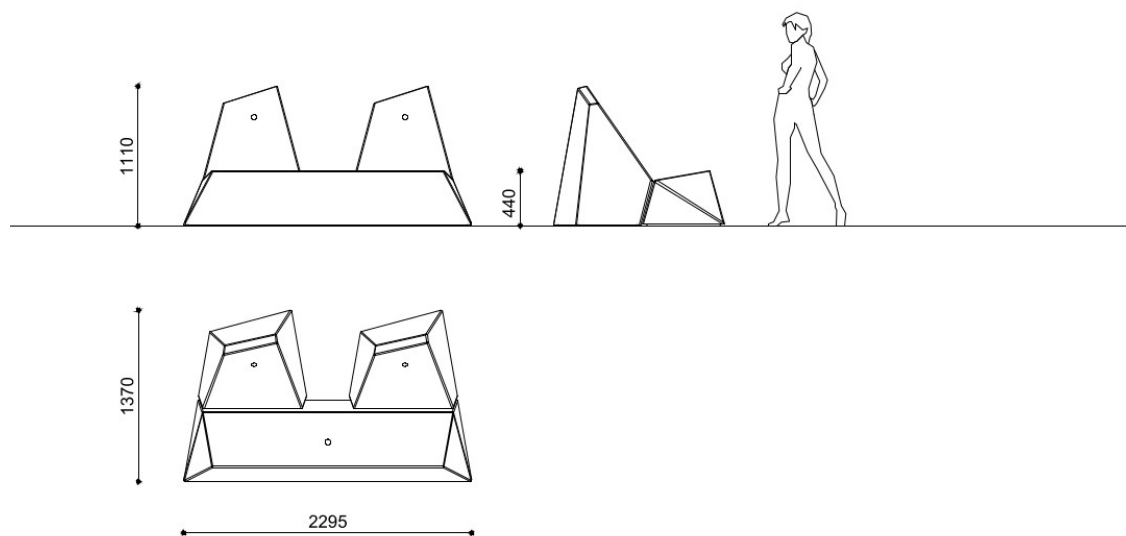
Monolithic diamond-shaped bench with two short backrests in PDM (Reconstituted Stones) with granite aggregates - sandblasted.

Variant code: mpan00270

Size and weight: Width 2295mm
Length 1370mm
Height 1100mm
Weight 1585kg
Seat Height 440mm

Materials: PDM (Reconstituted Stones) granite

Technical drawing:



Finishes: Sandblasted

Color:
Granite colour to be chosen between white and grey.

Fixing: Freestanding

metalco.it
info@metalco.it



RECONSTITUED STONES

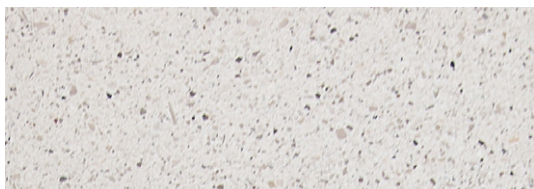
Our PDM (Reconstituted Stones) is a mixture of concrete and aggregates that combines concrete resistance with natural stone elegance.

It is available in four options with white granite, with grey granite, with white marble, and with black marble.

Our products are normally provided with sandblasted finish and with brushed finish for the seating flat surfaces.

Upon request, if the product allows it, it is possible to perform polishing operations.

The finished products are treated with a revitalizing varnish and, if requested, anti-graffiti treatment can be applied.



WHITE GRANITE BRUSHED



WHITE GRANITE SANDBLASTED



GREY GRANITE BRUSHED



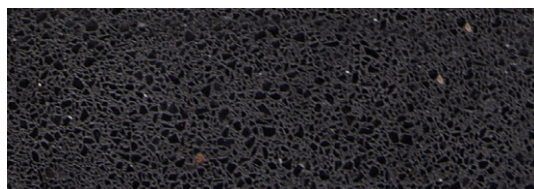
GREY GRANITE SANDBLASTED



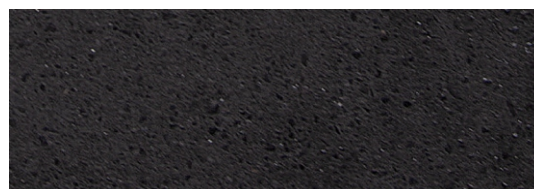
WHITE MARBLE BRUSHED



WHITE MARBLE SANDBLASTED



BLACK MARBLE BRUSHED



BLACK MARBLE SANDBLASTED

N.B.: Please note that the images reproduced on these pages are purely indicative. For more information about the materials, visit our website

metalco.it
info@metalco.it

