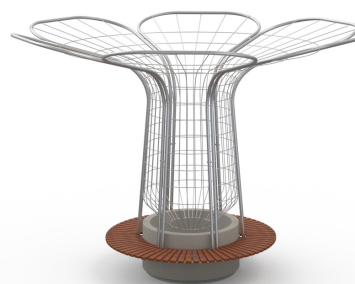


Mirabilis



Self-supporting shade consisting of a circular planter in PDM (Reconstituted Stones) with granite aggregates in sandblasted finish on which the galvanized frames in tubular steel, sheet steel and shaped steel round are fixed. The shade is equipped with a perimeter bench made of tubular steel and sheet steel and hardwood. The concrete components are treated with a protective varnish.

On request it is possible to apply the anti-graffiti treatment.

The available colors are white and gray.

Variant code: mfi00002

Size and weight: Width 4085mm
Length 4190mm
Height 3025mm
Weight 1100kg
Seat Height 450mm

Materials: PDM (Reconstituted Stones) granite

Galvanised steel

Finishes: PDM sandblasted

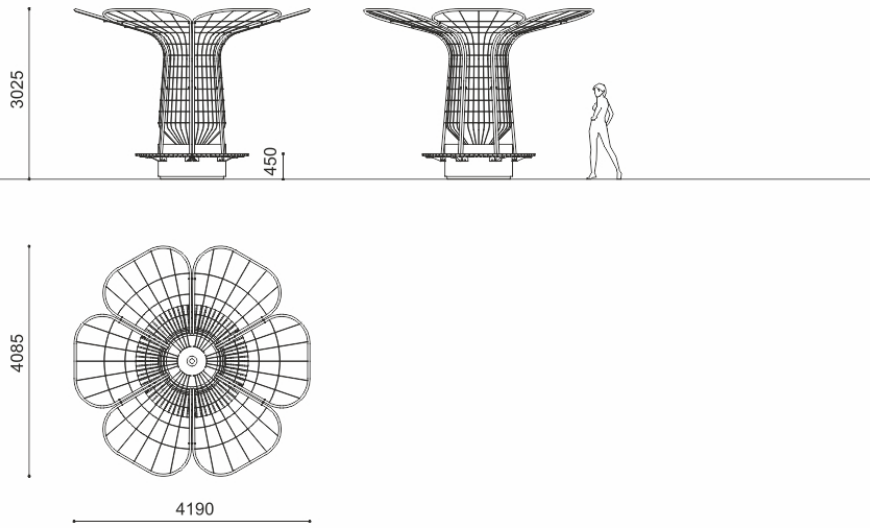
Galvanised steel

Color:
Granite colour to be chosen between white and grey.

Finishes:

Fixing: Freestanding

Technical drawing:



metalco.it
info@metalco.it



RECONSTITUED STONES

Our PDM (Reconstituted Stones) is a mixture of concrete and aggregates that combines concrete resistance with natural stone elegance.

It is available in four options with white granite, with grey granite, with white marble, and with black marble.

Our products are normally provided with sandblasted finish and with brushed finish for the seating flat surfaces.

Upon request, if the product allows it, it is possible to perform polishing operations.

The finished products are treated with a revitalizing varnish and, if requested, anti-graffiti treatment can be applied.



WHITE GRANITE BRUSHED



WHITE GRANITE SANDBLASTED



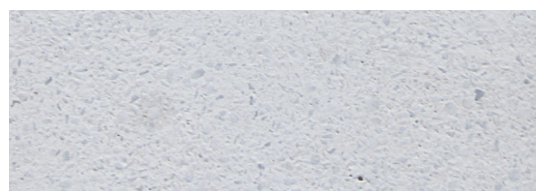
GREY GRANITE BRUSHED



GREY GRANITE SANDBLASTED



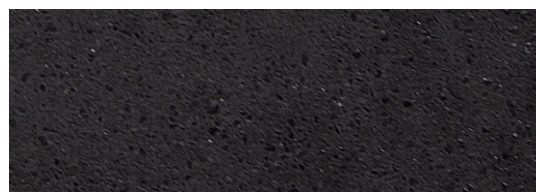
WHITE MARBLE BRUSHED



WHITE MARBLE SANDBLASTED



BLACK MARBLE BRUSHED



BLACK MARBLE SANDBLASTED

N.B.: Please note that the images reproduced on these pages are purely indicative.
For more information about the materials, visit our website

metalco.it
info@metalco.it

