

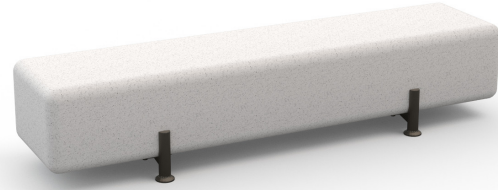
Sofa'

The flat bench collection features a linear or curved monolith crafted from PDM (Reconstituted Stone) with granite aggregates, finished with a sandblasted surface and rounded edges for a sleek, functional design. The rectangular structure is securely mounted on four die-cast aluminum supports, ensuring stability and durability. Seating options include coverings in hardwood or thermo-treated pine slats, combining comfort with natural style. To complete the solution, benches can be equipped with backrests, tables, and armrests in painted steel, offering modularity that perfectly fits the demands of modern urban spaces.

metalco.it
info@metalco.it



Sofa' 2120



Flat bench composed of a linear monolith in PDM (Pietre Ricostruite) with granite aggregates in a sandblasted finish, rectangular in shape with connected edges, fixed to four supports in cast aluminum coated with polyester powders. The bench can be accessorized with a backrest in hardwood or heat-treated pine, coffee table or armrest. The concrete components are treated with a protective varnish. On request, it is possible to apply the anti-graffiti treatment and, where possible, carry out sanding operations.

The available colors are white and gray.

Variant code: mpan00042asa

Size and weight: Width 580mm
Length 2120mm
Weight 675kg
Seat Height 435mm

Materials: PDM (Reconstituted Stones) granite

Polyester powder coated aluminum

Finishes: PDM (Reconstituted Stones) sandblasted

Polyester powder coated aluminum in wrinkled finish

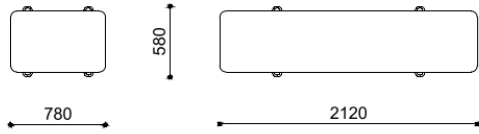
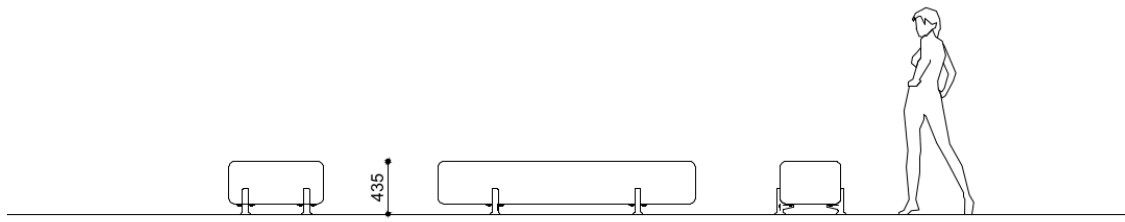
Color:

Granite colour to be chosen between white and grey.

Aluminum colour to be chosen from Metalco standard colour range.

Fixing: Freestanding

Technical drawing:



metalco.it
info@metalco.it



POWDER COATED STEEL - POWDER COATED ALUMINUM

For every steel product and component, we choose the most suitable raw materials and treatments based on our production cycle and the needs of each design.

Our steel treatments include hot-dip galvanization, cold galvanizing, Sendzimir galvanization, cataphoresis and primer coating.

For our aluminum products and components, we use aluminum in sheet or in extrusion or in casting.

Then we powder coat steel, stainless steel, and aluminum with polyester powder, in accordance with EN ISO 12944-2.

We offer a wide range of standard RAL colors with wrinkled finish with different levels of texture. Only when customization through stickers, pad printing or serigraphy is provided, for technical reasons, their finish will be smooth matte or smooth glossy, depending on the technical feasibility.

We also offer the exclusive SABLÈ' colours, with a peculiar metallic wrinkled texture.

Upon request, different treatments and customizations are available, such as powder coating with non-standard RAL colors, and/or with smooth matte and smooth glossy finishes, and/or anti-graffiti treatment.

If required, the powder coating process can be certified Quality Steel.

RAL



SABLÈ



The mentioned RAL and SABLÈ colours should be considered only illustrative.

metalco.it
info@metalco.it



RECONSTITUED STONES

Our PDM (Reconstituted Stones) is a mixture of concrete and aggregates that combines concrete resistance with natural stone elegance.

It is available in four options with white granite, with grey granite, with white marble, and with black marble.

Our products are normally provided with sandblasted finish and with brushed finish for the seating flat surfaces.

Upon request, if the product allows it, it is possible to perform polishing operations.

The finished products are treated with a revitalizing varnish and, if requested, anti-graffiti treatment can be applied.



WHITE GRANITE BRUSHED



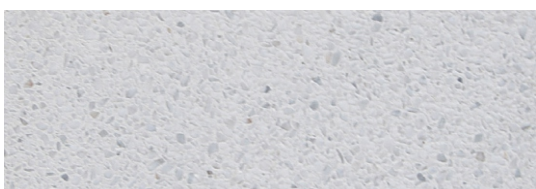
WHITE GRANITE SANDBLASTED



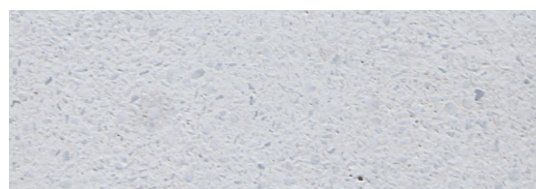
GREY GRANITE BRUSHED



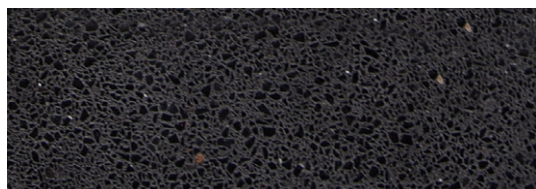
GREY GRANITE SANDBLASTED



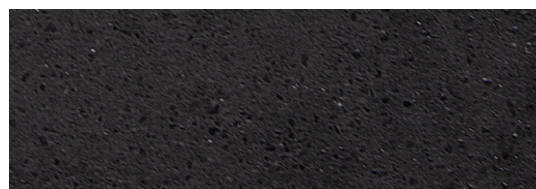
WHITE MARBLE BRUSHED



WHITE MARBLE SANDBLASTED



BLACK MARBLE BRUSHED



BLACK MARBLE SANDBLASTED

N.B.: Please note that the images reproduced on these pages are purely indicative. For more information about the materials, visit our website

metalco.it
info@metalco.it

