

# Spitz

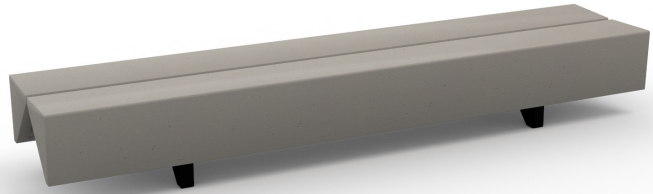


The flat bench consists of two linear or curved slats with a triangular section, crafted from HPC (High Performance Concrete) with a smooth velvet formwork finish. The slats are mounted on 5mm thick folded steel sheet supports, ensuring strength and stability. An adjustable fastening system with tracks and screws allows easy modification of the seat alignment to suit various environments. Linear versions can be enhanced with accessories such as backrests, armrests, painted steel tabletops, and integrated lighting, combining functionality with contemporary design.



[metalco.it](http://metalco.it)  
[info@metalco.it](mailto:info@metalco.it)





Bench without backrest consisting of a pair of aligned linear slats with a triangular section in HPC (High Performance Concrete) velluto - natural smooth, fixed to press-formed steel sheet supports. The bench can be equipped with backrest, armrests and table in powder coated steel (thick 5mm) and LED lighting system.

---

**Variant code:** mpan00038asa

---

**Size and weight:** Width 630mm  
Length 2950mm  
Height 730mm  
Weight 590kg  
Seat Height 420mm

---

**Materials:** HPC (High Performance Concrete)  
  
Polyester powder coated steel

---

---

**Finishes:** HPC (High Performance Concrete) velluto - natural smooth

Polyester powder coated steel in wrinkled finish

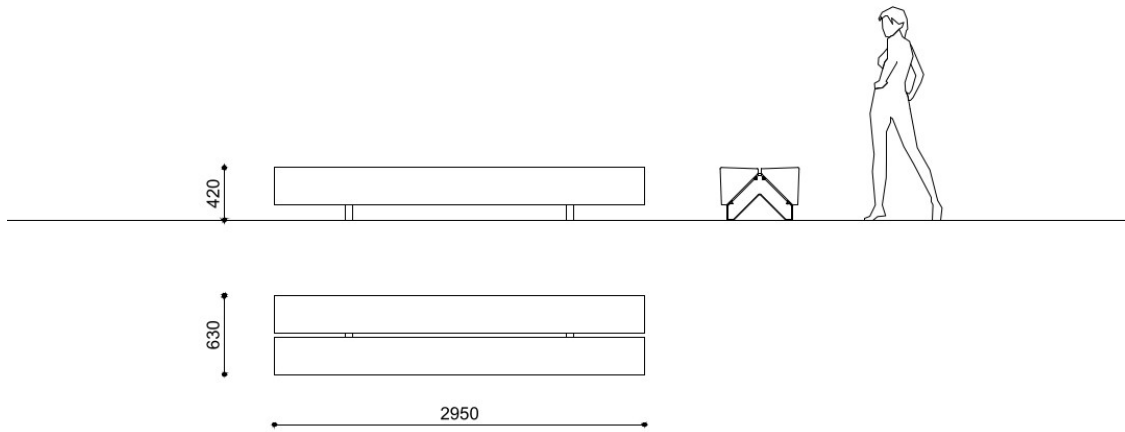
Color:  
HPC colour to be chosen between grey, white, dark grey, green and yellow.

Steel colour to be chosen from Metalco standard colour range.

---

**Fixing:** Pre-drilled for anchors

Technical drawing:



metalco.it  
info@metalco.it



# POWDER COATED STEEL - POWDER COATED ALUMINUM

For every steel product and component, we choose the most suitable raw materials and treatments based on our production cycle and the needs of each design.

Our steel treatments include hot-dip galvanization, cold galvanizing, Sendzimir galvanization, cataphoresis and primer coating.

For our aluminum products and components, we use aluminum in sheet or in extrusion or in casting.

Then we powder coat steel, stainless steel, and aluminum with polyester powder, in accordance with EN ISO 12944-2.

We offer a wide range of standard RAL colors with wrinkled finish with different levels of texture. Only when customization through stickers, pad printing or serigraphy is provided, for technical reasons, their finish will be smooth matte or smooth glossy, depending on the technical feasibility.

We also offer the exclusive SABLÈ' colours, with a peculiar metallic wrinkled texture.

Upon request, different treatments and customizations are available, such as powder coating with non-standard RAL colors, and/or with smooth matte and smooth glossy finishes, and/or anti-graffiti treatment.

If required, the powder coating process can be certified Quality Steel.

## RAL



## SABLÈ



The mentioned RAL and SABLÈ colours should be considered only illustrative.

metalco.it  
info@metalco.it



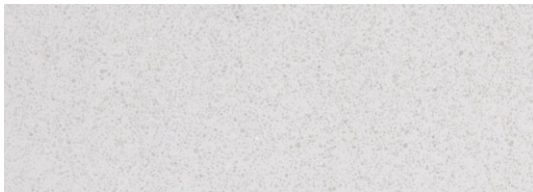
## HPC (HIGH PERFORMANCE CONCRETE)

Our HPC is available in five different colors (white, grey, dark grey, green and yellow) and it is provided, as standard, with VELLUTO – natural smooth finish.

Characterized by textured appearance, HPC can present not uniform cloudy effects of color and light cracks, which are physiological aspects of this material.

Upon request, when technically feasible, it is possible to perform polishing operations.

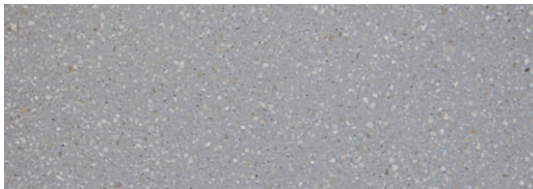
The finished products are treated with a protective varnish, and upon request, anti-graffiti treatment can be also applied.



WHITE POLISHED



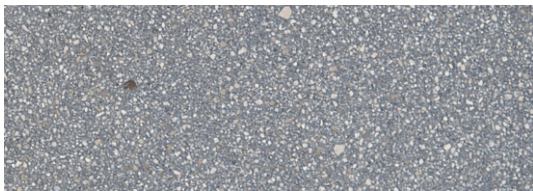
WHITE VELLUTO - NATURAL SMOOTH



GREY POLISHED



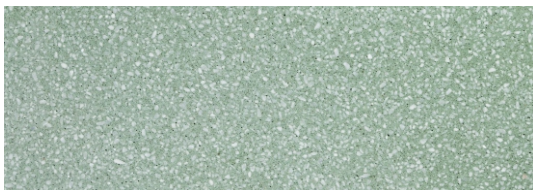
GREY VELLUTO - NATURAL SMOOTH



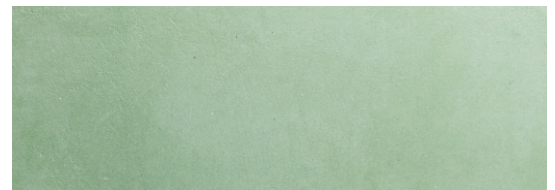
DARK GREY POLISHED



DARK GREY VELLUTO - NATURAL SMOOTH



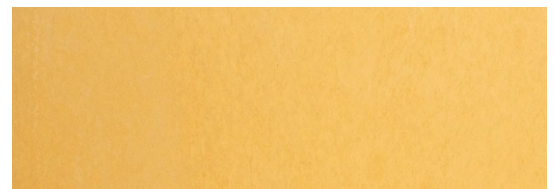
GREEN POLISHED



GREEN - NATURAL SMOOTH



YELLOW POLISHED



YELLOW VELLUTO - NATURAL SMOOTH

N.B.: Please note that the images reproduced on these pages are purely indicative. For more information about the materials, visit our website

metalco.it  
info@metalco.it

