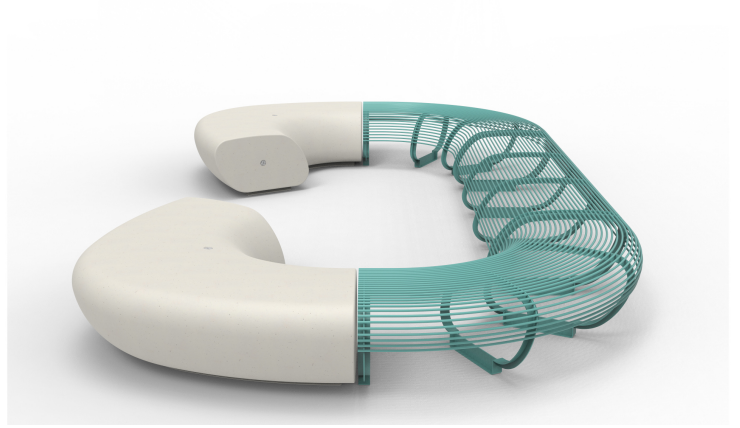
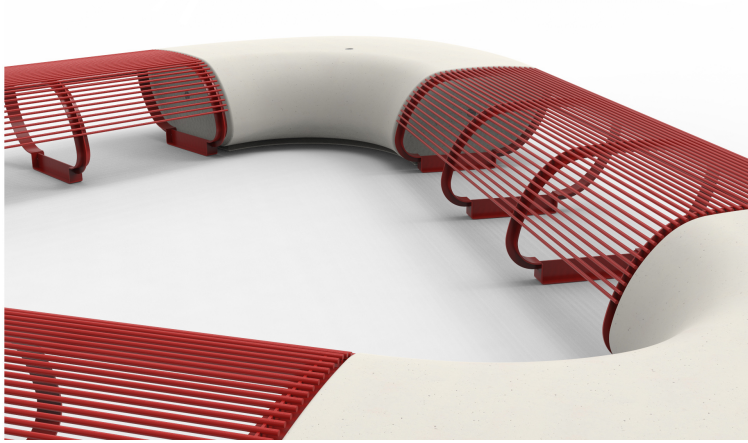


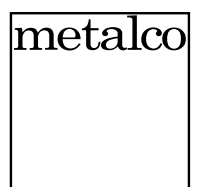
Tree Wire



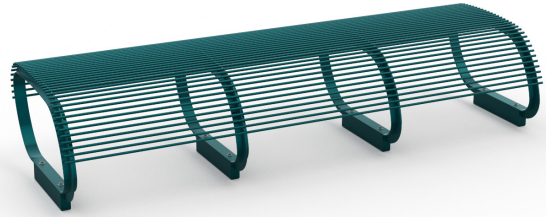
The collection of flat benches, available in linear or curved designs, features a sturdy structure made of steel rods screwed into aluminum castings. This combination ensures durability and lightness, while the galvanized finish and thermosetting polyester powder coating protect every component from weather and wear. The benches can be customized with backrests and tables, offering modular and versatile solutions for urban furnishing. Fully compatible with the TREE LINE and LORENZ collections elements, they are perfect for creating harmonious and functional public spaces.



metalco.it
info@metalco.it



Tree Wire



Bench L=2200 without backrest made of 10 mm diameter steel rods welded to 5 mm thick press-formed steel sheet supports. The bench can be accessorised with a backrest in 10 mm diameter steel rods and 5 mm thick steel sheet and/or a small table in 30 x 2 mm steel tubing and 5 mm thick sheet.

Variant code: mpan00052asa

Size and weight: Width 2200mm
Length 745mm
Weight 80kg
Seat Height 460mm

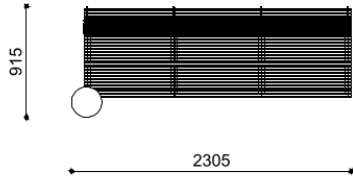
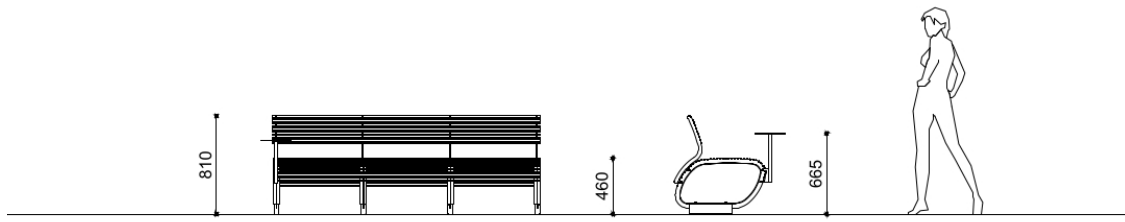
Materials: Steel treated with protective coating and powder coating + Polyester powder coated aluminum

Finishes: Polyester powder coated steel in wrinkled finish

Color:
to be chosen from Metalco standard colour range

Fixing: Pre-drilled for anchors

Technical drawing:



metalco.it
info@metalco.it



POWDER COATED STEEL - POWDER COATED ALUMINUM

For every steel product and component, we choose the most suitable raw materials and treatments based on our production cycle and the needs of each design.

Our steel treatments include hot-dip galvanization, cold galvanizing, Sendzimir galvanization, cataphoresis and primer coating.

For our aluminum products and components, we use aluminum in sheet or in extrusion or in casting.

Then we powder coat steel, stainless steel, and aluminum with polyester powder, in accordance with EN ISO 12944-2.

We offer a wide range of standard RAL colors with wrinkled finish with different levels of texture. Only when customization through stickers, pad printing or serigraphy is provided, for technical reasons, their finish will be smooth matte or smooth glossy, depending on the technical feasibility.

We also offer the exclusive SABLÈ' colours, with a peculiar metallic wrinkled texture.

Upon request, different treatments and customizations are available, such as powder coating with non-standard RAL colors, and/or with smooth matte and smooth glossy finishes, and/or anti-graffiti treatment.

If required, the powder coating process can be certified Quality Steel.

RAL



SABLÈ



The mentioned RAL and SABLÈ colours should be considered only illustrative.

metalco.it
info@metalco.it

