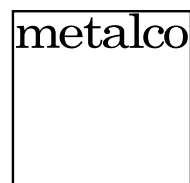


Baia Elements



The Baia Elements collection offers a modern and functional approach to urban spaces, consisting of various elements designed for comfort, aesthetics, and durability. The benches, available in linear or curved versions and in two different heights, feature seats made of HPC (High Performance Concrete) and a central support in steel, ensuring strength and long-lasting resistance. The tables, also available in two heights, have a base in steel and a circular top in HPL (High Pressure Laminate), supported by an HPC base. The planter, with a steel structure, is raised on practical supports. All elements of the Baia collection are designed to be anchored to the ground using counterplates, with provisions for dowels, or through cementation, ensuring stable integration into the urban environment.

metalco.it
info@metalco.it



Baia Angle H



Curved high bench composed of a seat in HPC (High Performance Concrete) velluto - liscio naturale and a central support in powder coated steel.

Variant code: 0561141

Size and weight: Width 980mm
Length 980mm
Height 710mm
Weight 130kg

Materials: Steel treated with protective coating and powder coating

HPC (High Performance Concrete) velluto - natural smooth

Finishes: Polyester powder coated steel in wrinkled finish
+
HPC (High Performance Concrete) velluto - natural smooth

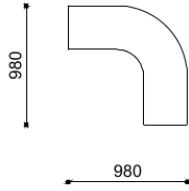
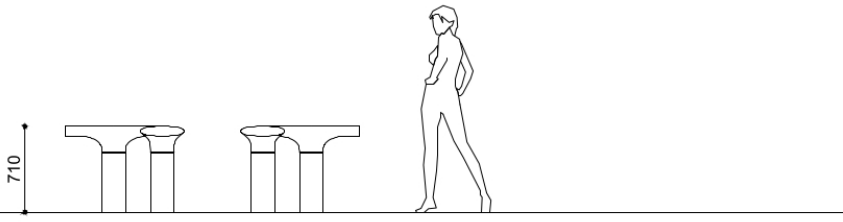
Color:
to be chosen from Metalco standard colour range

HPC colour to be chosen between grey, white and dark grey.

Finishes:

Fixing: Pre-drilled for anchors or Below ground installation

Technical drawing:



metalco.it
info@metalco.it



POWDER COATED STEEL - POWDER COATED ALUMINUM

For every steel product and component, we choose the most suitable raw materials and treatments based on our production cycle and the needs of each design.

Our steel treatments include hot-dip galvanization, cold galvanizing, Sendzimir galvanization, cataphoresis and primer coating.

For our aluminum products and components, we use aluminum in sheet or in extrusion or in casting.

Then we powder coat steel, stainless steel, and aluminum with polyester powder, in accordance with EN ISO 12944-2.

We offer a wide range of standard RAL colors with wrinkled finish with different levels of texture. Only when customization through stickers, pad printing or serigraphy is provided, for technical reasons, their finish will be smooth matte or smooth glossy, depending on the technical feasibility.

We also offer the exclusive SABLÈ' colours, with a peculiar metallic wrinkled texture.

Upon request, different treatments and customizations are available, such as powder coating with non-standard RAL colors, and/or with smooth matte and smooth glossy finishes, and/or anti-graffiti treatment.

If required, the powder coating process can be certified Quality Steel.

RAL



SABLÈ



The mentioned RAL and SABLÈ colours should be considered only illustrative.

metalco.it
info@metalco.it



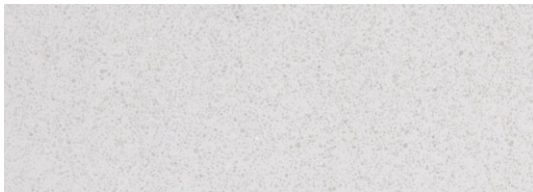
HPC (HIGH PERFORMANCE CONCRETE)

Our HPC is available in five different colors (white, grey, dark grey, green and yellow) and it is provided, as standard, with VELLUTO – natural smooth finish.

Characterized by textured appearance, HPC can present not uniform cloudy effects of color and light cracks, which are physiological aspects of this material.

Upon request, when technically feasible, it is possible to perform polishing operations.

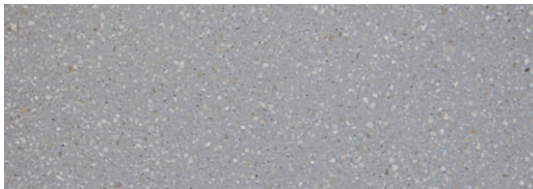
The finished products are treated with a protective varnish, and upon request, anti-graffiti treatment can be also applied.



WHITE POLISHED



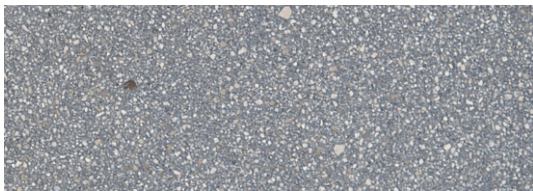
WHITE VELLUTO - NATURAL SMOOTH



GREY POLISHED



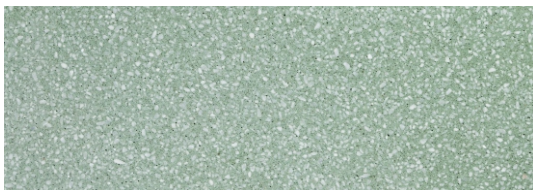
GREY VELLUTO - NATURAL SMOOTH



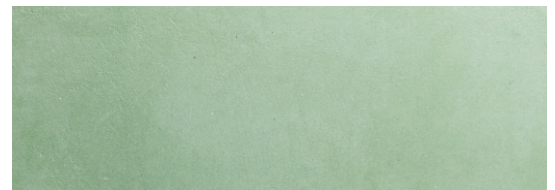
DARK GREY POLISHED



DARK GREY VELLUTO - NATURAL SMOOTH



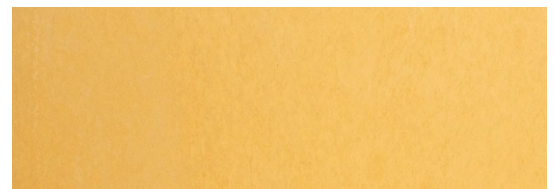
GREEN POLISHED



GREEN - NATURAL SMOOTH



YELLOW POLISHED



YELLOW VELLUTO - NATURAL SMOOTH

N.B.: Please note that the images reproduced on these pages are purely indicative. For more information about the materials, visit our website

metalco.it
info@metalco.it

