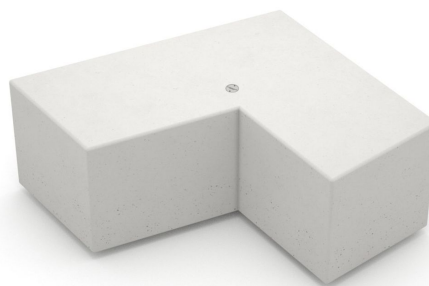


Up



Modular L-shaped monolithic left bench, without backrest, made of HPC (High Performance Concrete) velluto finish, partially emptied inside. It can be installed individually or in compositions.

Variant code: 0019760

Size and weight:
Width 950mm
Length 1031mm
Weight 560kg
Seat Height 480mm

Materials: HPC (High Performance Concrete)

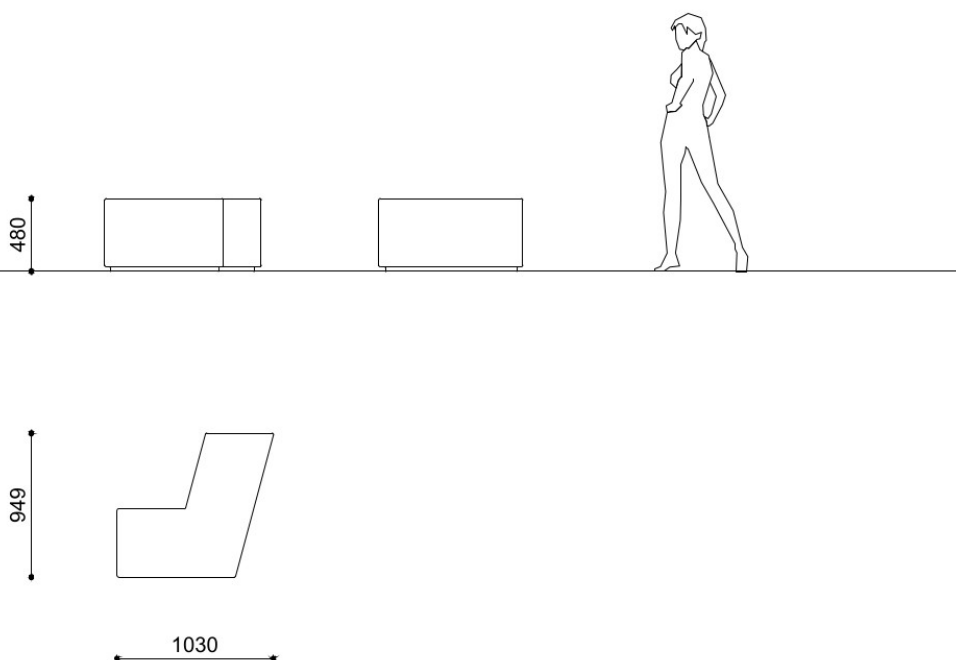
Finishes: HPC (High Performance Concrete) velluto - natural smooth

Color:
HPC colour to be chosen between grey, white and dark grey.

Fixing: Freestanding

Accessories: UP panca illuminazione LED

Technical drawing:



metalco.it
info@metalco.it



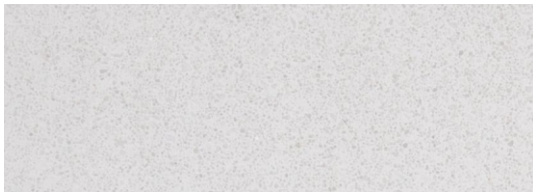
HPC (HIGH PERFORMANCE CONCRETE)

Our HPC is available in five different colors (white, grey, dark grey, green and yellow) and it is provided, as standard, with VELLUTO – natural smooth finish.

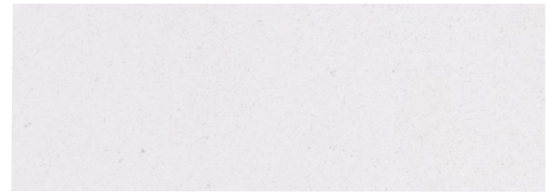
Characterized by textured appearance, HPC can present not uniform cloudy effects of color and light cracks, which are physiological aspects of this material.

Upon request, when technically feasible, it is possible to perform polishing operations.

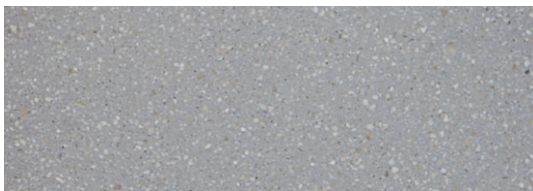
The finished products are treated with a protective varnish, and upon request, anti-graffiti treatment can be also applied.



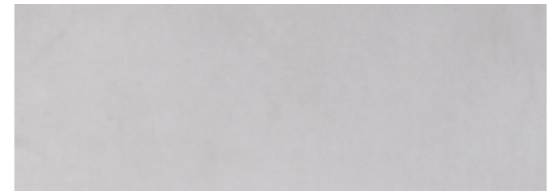
WHITE POLISHED



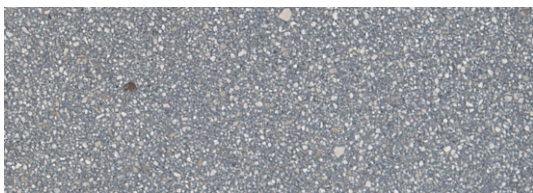
WHITE VELLUTO - NATURAL SMOOTH



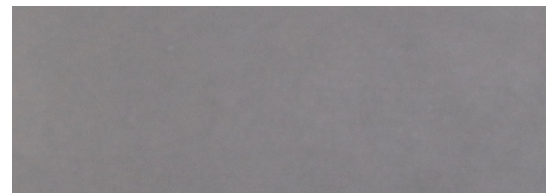
GREY POLISHED



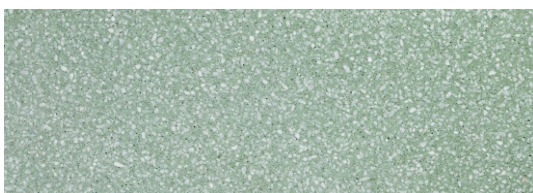
GREY VELLUTO - NATURAL SMOOTH



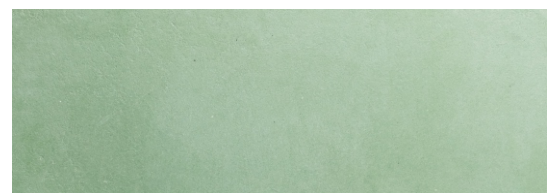
DARK GREY POLISHED



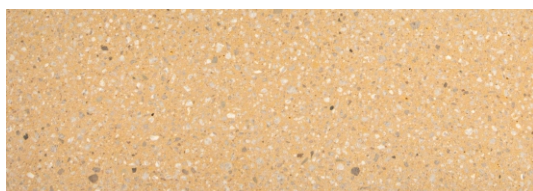
DARK GREY VELLUTO - NATURAL SMOOTH



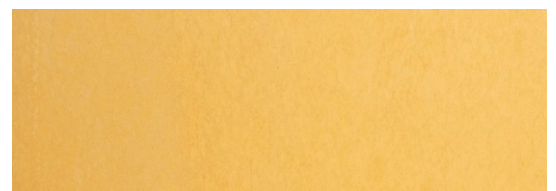
GREEN POLISHED



GREEN - NATURAL SMOOTH



YELLOW POLISHED



YELLOW VELLUTO - NATURAL SMOOTH

N.B.: Please note that the images reproduced on these pages are purely indicative. For more information about the materials, visit our website

metalco.it
info@metalco.it

