

# Libre



LIBRE benches are equipped with arched supports in cast aluminum or vertical supports in tubular steel, ideal for ensuring a solid and resistant structure over time. The seat and backrest, made of painted steel or stainless steel tubes, are welded on sturdy support shoulders, connected by a horizontal bar. With seven models to choose from — four curved and three linear — you can easily configure the benches individually or in creative compositions to fit perfectly into your public space.



Received a "Special Mention" at the "German Design Awards"



Nominated for the "Prix du Palmarès de l'ArchiDesignClub"



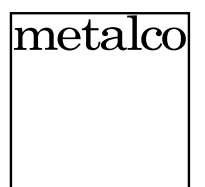
Included in the book "Disegno e Design Brevetti e Creatività Italiani"



Exposed at the exhibition "Disegno e Design Brevetti e Creatività italiani"

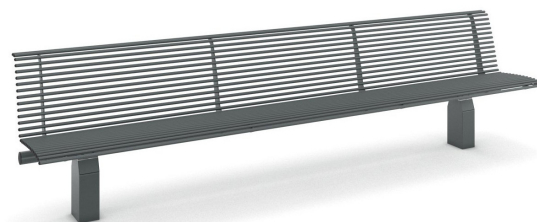


metalco.it  
info@metalco.it



# Libre 3000

---



Modular, linear bench with backrest and two galvanised and polyester powder-coated tubular steel supports and sheet metal base plate, fixed to the bar with special clamp devices in cast aluminium coated with polyester powders. The seat surface with back, galvanized and polyester powder coated, consists of a series of steel tubes welded on sheet metal support shoulders connected to each other by a horizontal tubular bar. All the tubes have special PVC caps at the ends.

---

**Variant code:** 0014814

---

**Size and weight:** Width 1045mm  
Length 3000mm  
Height 810mm  
Weight 90kg  
Seat Height 458mm

---

**Materials:** Steel treated with protective coating and powder coating

Steel treated with protective coating and powder coating (supports)

---

**Finishes:** Polyester powder coated steel in wrinkled finish

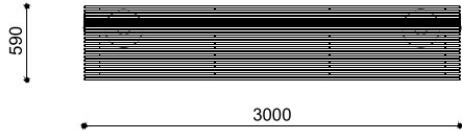
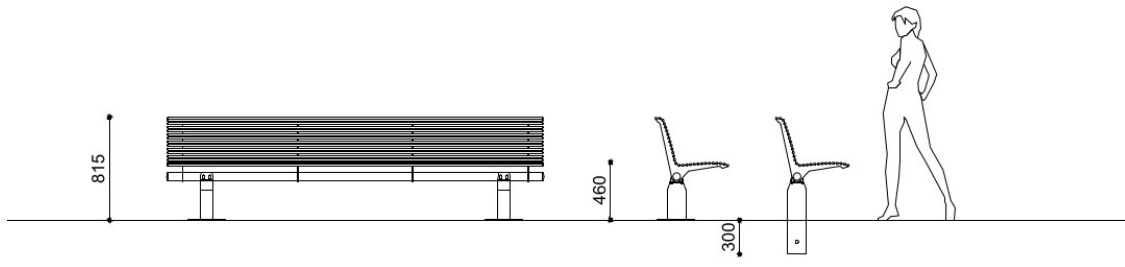
Polyester powder coated steel in wrinkled finish

Color:  
to be chosen from Metalco standard colour range

---

**Fixing:** Freestanding with pedestals or Below ground installation or Pre-drilled for anchors

Technical drawing:



metalco.it  
info@metalco.it



# POWDER COATED STEEL - POWDER COATED ALUMINUM

For every steel product and component, we choose the most suitable raw materials and treatments based on our production cycle and the needs of each design.

Our steel treatments include hot-dip galvanization, cold galvanizing, Sendzimir galvanization, cataphoresis and primer coating.

For our aluminum products and components, we use aluminum in sheet or in extrusion or in casting.

Then we powder coat steel, stainless steel, and aluminum with polyester powder, in accordance with EN ISO 12944-2.

We offer a wide range of standard RAL colors with wrinkled finish with different levels of texture. Only when customization through stickers, pad printing or serigraphy is provided, for technical reasons, their finish will be smooth matte or smooth glossy, depending on the technical feasibility.

We also offer the exclusive SABLÈ' colours, with a peculiar metallic wrinkled texture.

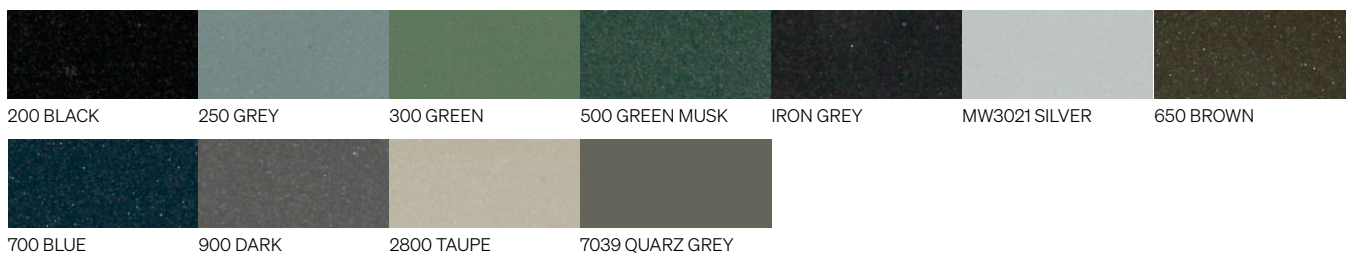
Upon request, different treatments and customizations are available, such as powder coating with non-standard RAL colors, and/or with smooth matte and smooth glossy finishes, and/or anti-graffiti treatment.

If required, the powder coating process can be certified Quality Steel.

## RAL



## SABLÈ



The mentioned RAL and SABLÈ colours should be considered only illustrative.

metalco.it  
info@metalco.it

