

Lorenz



The collection of monolithic and modular seating is made from PDM (Reconstituted Stones), a durable and resilient material that provides a sense of solidity and natural appeal. The range includes six linear modules, available in two lengths, with either a flat seat or a seat with a hardwood backrest, positioned on the inner or outer side. The curved module features a flat hardwood seat on the outer side. These elements can be seamlessly combined with the TREE LINE and TREE WIRE collections, offering versatile solutions for public and urban spaces.



metalco.it
info@metalco.it



metalco

Lorenz



Long seat in sandblasted granite PDM (Reconstituted Stones) and integrated flat seat with internal fold in hardwood, fixed with stainless steel tubular brackets. Each element is equipped with reinforced bushings for lifting. The surface is protected by special matt satin paints.

Variant code: 0070000

Size and weight: Width 750mm
Length 2200mm
Weight 1356kg
Seat Height 460mm

Materials: PDM (Reconstituted Stones)

Hardwood

Stainless steel

Finishes: PDM (Reconstituted Stones)sandblasted

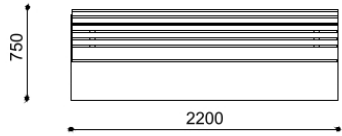
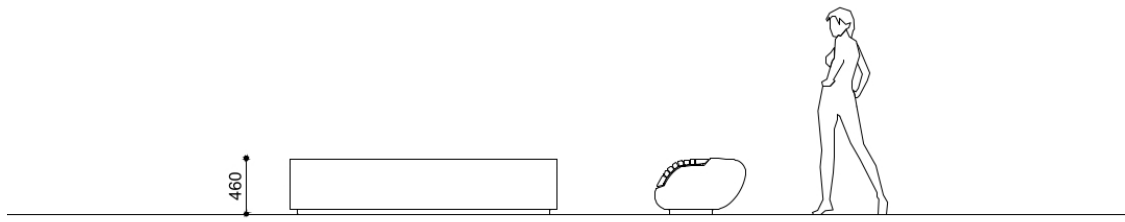
Hardwood with water-based pigmented impregnation

Color:
Granite colour to be chosen between white and grey;

Finishes:

Fixing: Freestanding

Technical drawing:



metalco.it
info@metalco.it



WOOD

We use different types of wood for our products, including hardwood, thermotreated pine wood* or Okumè wood.

The hardwood is provided with a water-based pigmented impregnation treatment.

Upon request, hardwood can be left natural/untreated.

Pine wood* undergoes heat treatment, which allows to obtain a material with a longer life cycle, greater resistance to weathering and decay, greater solidity and dimensional stability.

On request, it can be supplied with a water-based pigmented impregnation treatment.

Okumè wood products are always supplied with a water-based varnish.

Thermotreated pine and hardwood can be supplied with FSC certificate on request.

*Thermo-treated pine wood has knots of varying sizes.



THERMO-TREATED PINE



UNTREATED HARDWOOD



THERMO-TREATED PINE WITH PIGMENTED IMPREGNATION



HARDWOOD WITH PIGMENTED IMPREGNATION



VARNISHED OKUMÉ PLYWOOD



VARNISHED OKUMÉ



RECONSTITUED STONES

Our PDM (Reconstituted Stones) is a mixture of concrete and aggregates that combines concrete resistance with natural stone elegance.

It is available in four options with white granite, with grey granite, with white marble, and with black marble.

Our products are normally provided with sandblasted finish and with brushed finish for the seating flat surfaces.

Upon request, if the product allows it, it is possible to perform polishing operations.

The finished products are treated with a revitalizing varnish and, if requested, anti-graffiti treatment can be applied.



WHITE GRANITE BRUSHED



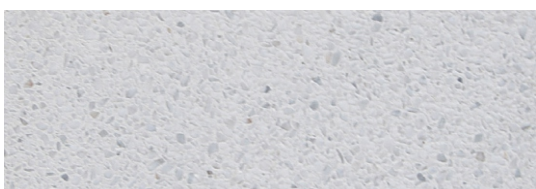
WHITE GRANITE SANDBLASTED



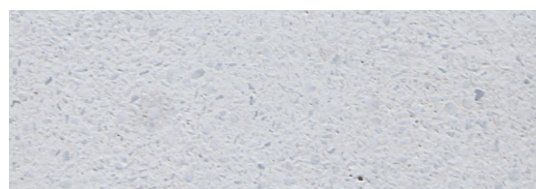
GREY GRANITE BRUSHED



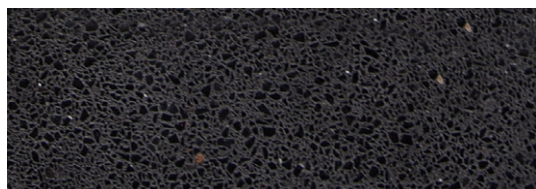
GREY GRANITE SANDBLASTED



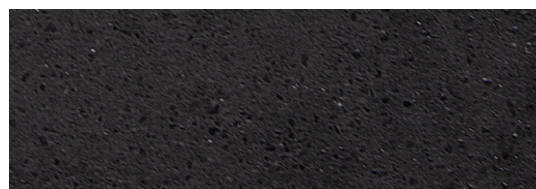
WHITE MARBLE BRUSHED



WHITE MARBLE SANDBLASTED



BLACK MARBLE BRUSHED



BLACK MARBLE SANDBLASTED

N.B.: Please note that the images reproduced on these pages are purely indicative.
For more information about the materials, visit our website

metalco.it
info@metalco.it

