

# Makatite



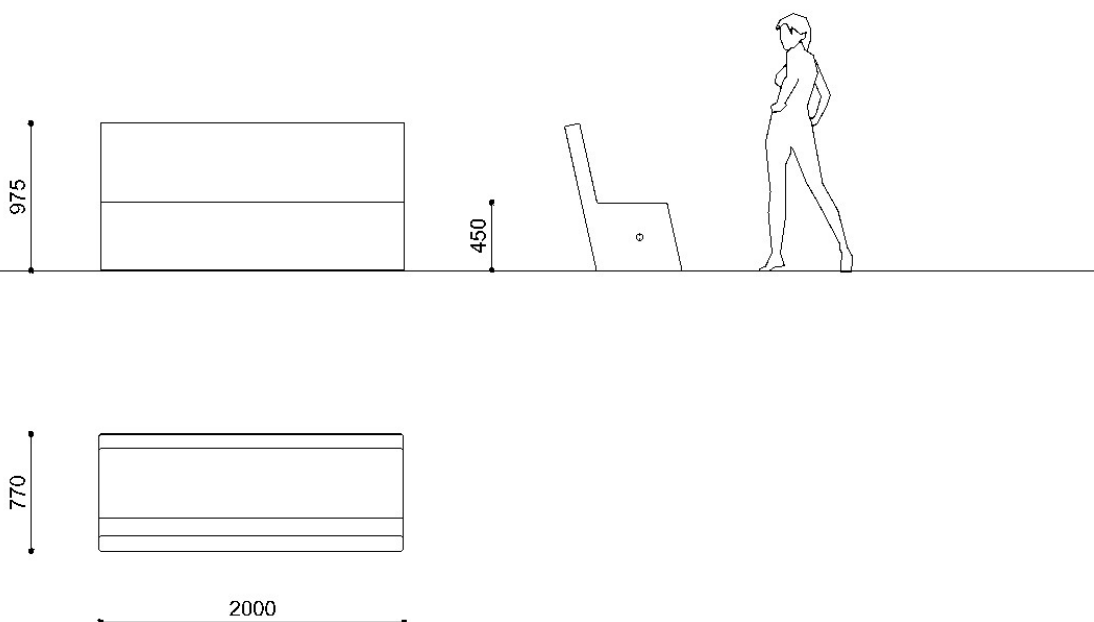
Modular monolithic bench in PDM (Reconstituted Stones) granite, with backrest. The bench can be installed individually or in composition.

**Variant code:** 0015520

**Size and weight:**  
Width 2000mm  
Length 771mm  
Height 974mm  
Weight 1500kg  
Seat Height 450mm

**Materials:** PDM (Reconstituted Stones)

## Technical drawing:



**Finishes:** Brushed top and sandblasted sides

**Color:**  
Granite colour to be chosen between white and grey

**Fixing:** Freestanding

**Accessories:** Extra per levigatura superiore

metalco.it  
info@metalco.it



## RECONSTITUED STONES

Our PDM (Reconstituted Stones) is a mixture of concrete and aggregates that combines concrete resistance with natural stone elegance.

It is available in four options with white granite, with grey granite, with white marble, and with black marble.

Our products are normally provided with sandblasted finish and with brushed finish for the seating flat surfaces.

Upon request, if the product allows it, it is possible to perform polishing operations.

The finished products are treated with a revitalizing varnish and, if requested, anti-graffiti treatment can be applied.



WHITE GRANITE BRUSHED



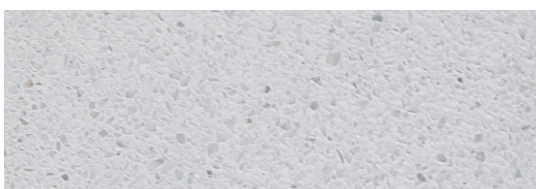
WHITE GRANITE SANDBLASTED



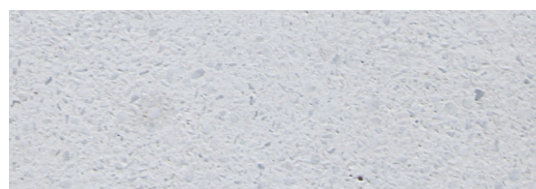
GREY GRANITE BRUSHED



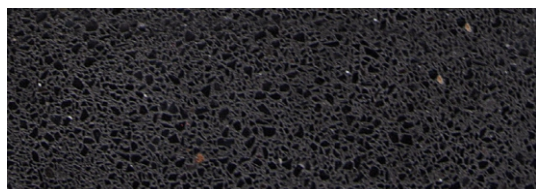
GREY GRANITE SANDBLASTED



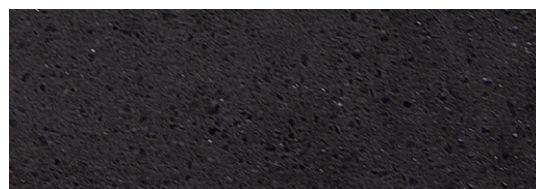
WHITE MARBLE BRUSHED



WHITE MARBLE SANDBLASTED



BLACK MARBLE BRUSHED



BLACK MARBLE SANDBLASTED

N.B.: Please note that the images reproduced on these pages are purely indicative.  
For more information about the materials, visit our website

metalco.it  
info@metalco.it

