

Moonstone



Monolithic seat in PDM (Reconstituted Stones) with white granite aggregates - sandblasted.

Variant code: 0050480

Size and weight: Width 2275mm
Length 2140mm
Weight 4200kg
Seat Height 740mm

Materials: PDM (Reconstituted Stones)

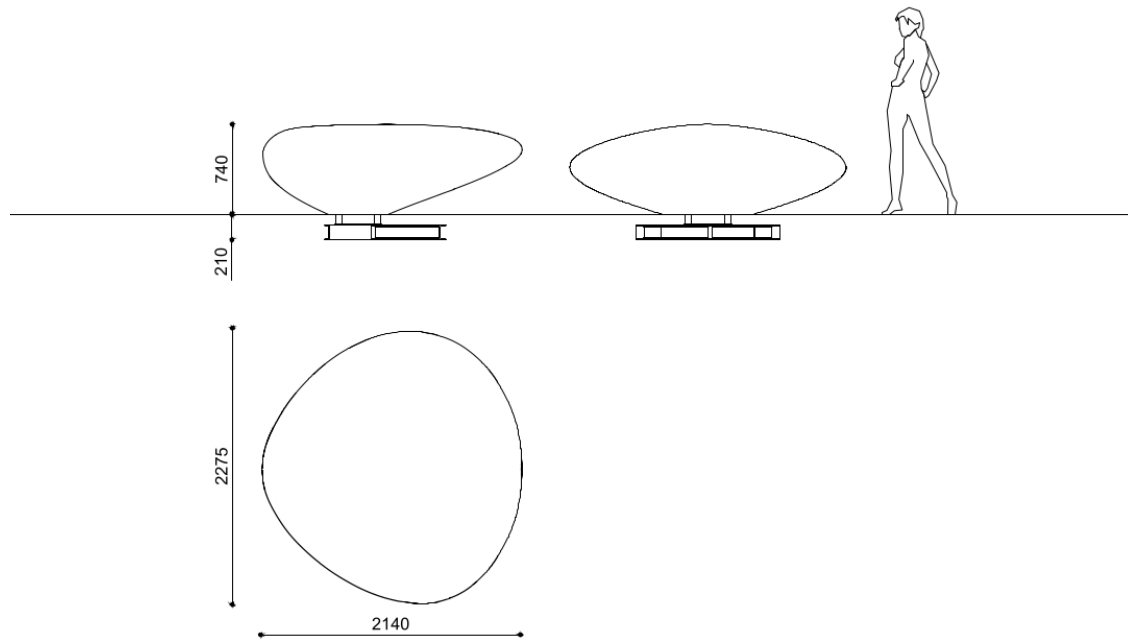
Finishes: Sandblasted

Color:
White granite

Fixing: Below ground installation

Accessories: Extra per colorazione superficiale monocromatica, Kit funi per sollevamento (1pz per ogni ordine, importo netto non scontabile, da riaccreditare al cliente al momento della restituzione del kit integro)

Technical drawing:



metalco.it
info@metalco.it



RECONSTITUED STONES

Our PDM (Reconstituted Stones) is a mixture of concrete and aggregates that combines concrete resistance with natural stone elegance.

It is available in four options with white granite, with grey granite, with white marble, and with black marble.

Our products are normally provided with sandblasted finish and with brushed finish for the seating flat surfaces.

Upon request, if the product allows it, it is possible to perform polishing operations.

The finished products are treated with a revitalizing varnish and, if requested, anti-graffiti treatment can be applied.



WHITE GRANITE BRUSHED



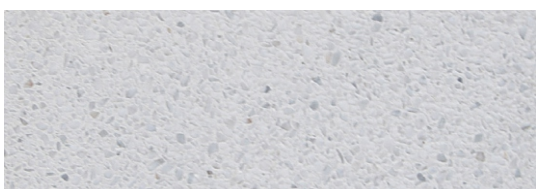
WHITE GRANITE SANDBLASTED



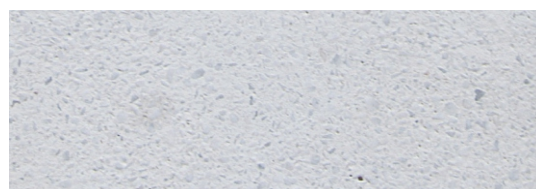
GREY GRANITE BRUSHED



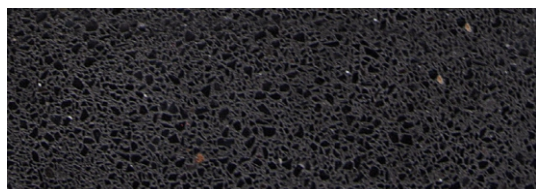
GREY GRANITE SANDBLASTED



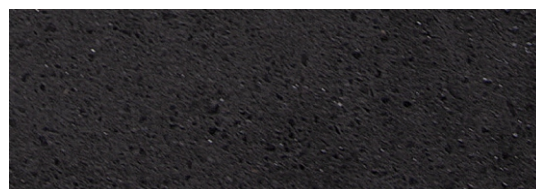
WHITE MARBLE BRUSHED



WHITE MARBLE SANDBLASTED



BLACK MARBLE BRUSHED



BLACK MARBLE SANDBLASTED

N.B.: Please note that the images reproduced on these pages are purely indicative.
For more information about the materials, visit our website

metalco.it
info@metalco.it

