

Realgar



Modular monolithic bench with tread in PDM (Reconstituted Stones) granite.
Brushed top and sandblasted sides, bush-hammered tread

Variant code: 0015540

Size and weight:
Width 2000mm
Length 1097mm
Height 550mm
Weight 1500kg
Seat Height 450mm

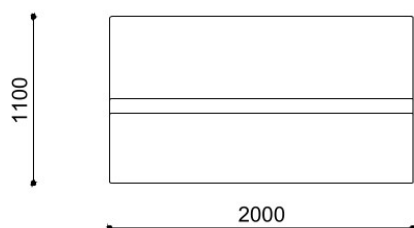
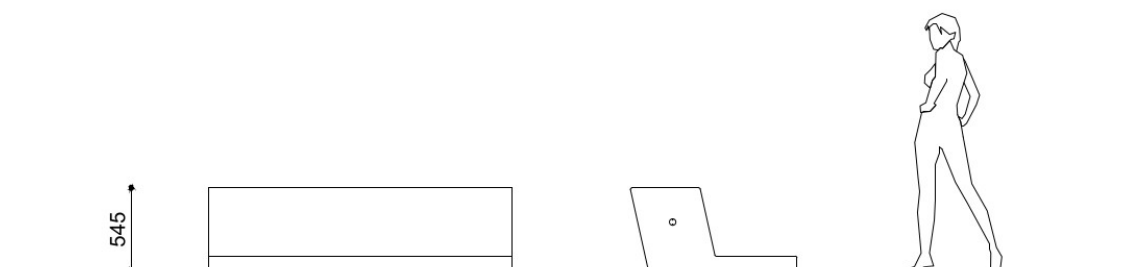
Materials: PDM (Reconstituted Stones)

Technical drawing:

Finishes: brushed top and sandblasted sides, bush-hammered tread

Color:
Granite colour to be chosen between white and grey;

Fixing: n/a



metalco.it
info@metalco.it



RECONSTITUED STONES

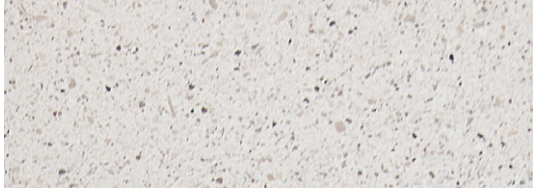
Our PDM (Reconstituted Stones) is a mixture of concrete and aggregates that combines concrete resistance with natural stone elegance.

It is available in four options with white granite, with grey granite, with white marble, and with black marble.

Our products are normally provided with sandblasted finish and with brushed finish for the seating flat surfaces.

Upon request, if the product allows it, it is possible to perform polishing operations.

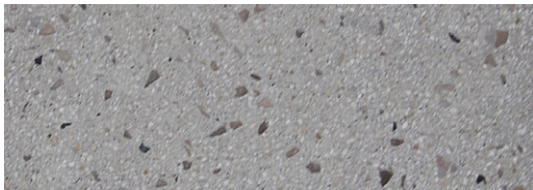
The finished products are treated with a revitalizing varnish and, if requested, anti-graffiti treatment can be applied.



WHITE GRANITE BRUSHED



WHITE GRANITE SANDBLASTED



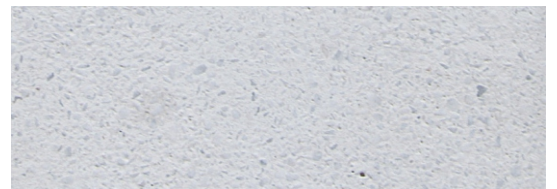
GREY GRANITE BRUSHED



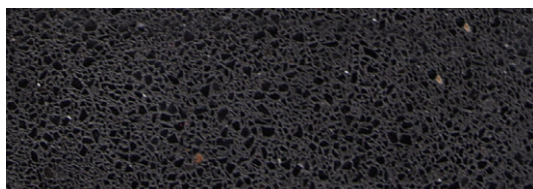
GREY GRANITE SANDBLASTED



WHITE MARBLE BRUSHED



WHITE MARBLE SANDBLASTED



BLACK MARBLE BRUSHED



BLACK MARBLE SANDBLASTED

N.B.: Please note that the images reproduced on these pages are purely indicative.
For more information about the materials, visit our website

metalco.it
info@metalco.it

