

Rivola



Monolithic seat in PDM (Reconstituted Stones) with granite aggregates.

Variant code: 0015500

Size and weight:
Width 645mm
Length 1800mm
Weight 790kg
Seat Height 420mm

Materials: PDM (Reconstituted Stones)

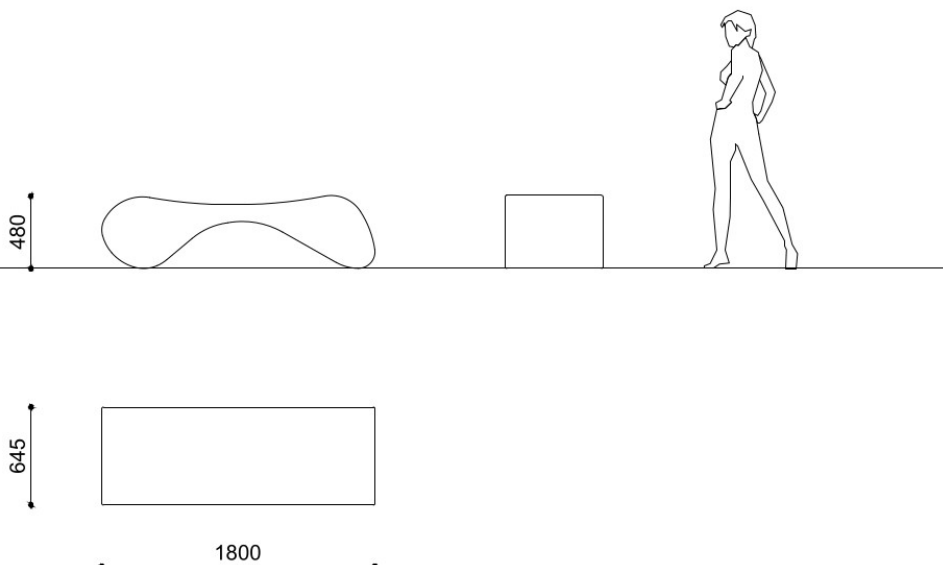
Finishes: Sandblasted, brushed flat sides

Color:
Granite colour to be chosen between white and grey.

Fixing: Freestanding

Accessories: Extra per levigatura lati RIVOLA

Technical drawing:



metalco.it
info@metalco.it



RECONSTITUED STONES

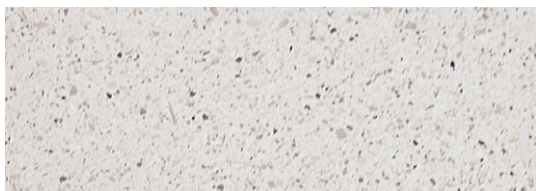
Our PDM (Reconstituted Stones) is a mixture of concrete and aggregates that combines concrete resistance with natural stone elegance.

It is available in four options with white granite, with grey granite, with white marble, and with black marble.

Our products are normally provided with sandblasted finish and with brushed finish for the seating flat surfaces.

Upon request, if the product allows it, it is possible to perform polishing operations.

The finished products are treated with a revitalizing varnish and, if requested, anti-graffiti treatment can be applied.



WHITE GRANITE BRUSHED



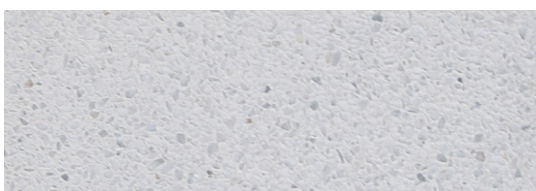
WHITE GRANITE SANDBLASTED



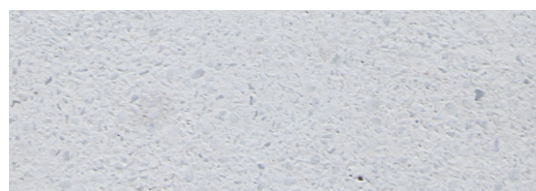
GREY GRANITE BRUSHED



GREY GRANITE SANDBLASTED



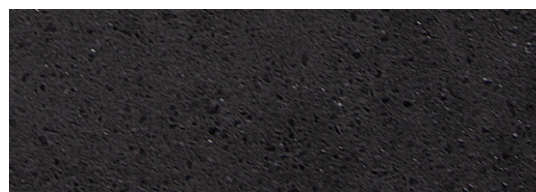
WHITE MARBLE BRUSHED



WHITE MARBLE SANDBLASTED



BLACK MARBLE BRUSHED



BLACK MARBLE SANDBLASTED

N.B.: Please note that the images reproduced on these pages are purely indicative. For more information about the materials, visit our website

metalco.it
info@metalco.it

