

Rubino



Cylindrical litter bin made of PDM (Reconstituted Stones) with granite aggregates equipped with a powder coated steel lid with central hole, opening with lock and provided with bag holder ring along the internal perimeter. The litter bin is decorated with horizontal milling and it is equipped with recess at the base.

Variant code: 0021470

Size and weight: Height 902mm
Weight 174kg
Diameter 520mm
Capacity 70lt

Materials: PDM (Reconstituted Stones) granite

Steel treated with protective coating and powder coating

Finishes: PDM Sandblasted

Polyester powder coated steel in wrinkled finish

Color:
PDM: white or grey

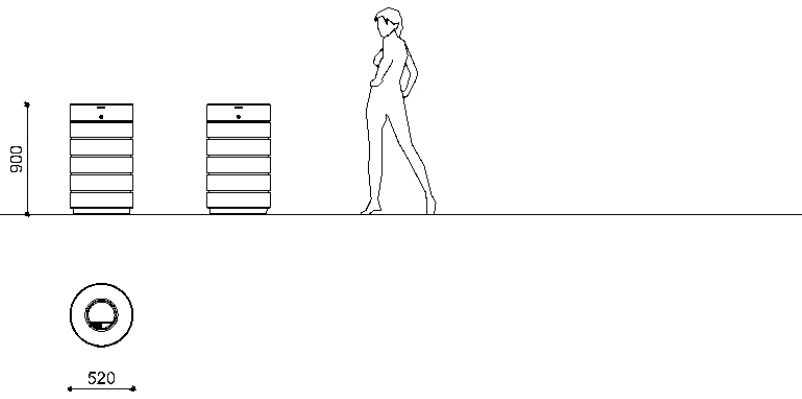
to be chosen from Metalco standard colour range

Finishes:

Fixing: Freestanding

Accessories: Contenitore interno RUBINO in acciaio zincato, Staffa con barra filettata M14x330 + dado e rondella da fissare con ancorante chimico (non fornito)

Technical drawing:



metalco.it
info@metalco.it



POWDER COATED STEEL - POWDER COATED ALUMINUM

For every steel product and component, we choose the most suitable raw materials and treatments based on our production cycle and the needs of each design.

Our steel treatments include hot-dip galvanization, cold galvanizing, Sendzimir galvanization, cataphoresis and primer coating.

For our aluminum products and components, we use aluminum in sheet or in extrusion or in casting.

Then we powder coat steel, stainless steel, and aluminum with polyester powder, in accordance with EN ISO 12944-2.

We offer a wide range of standard RAL colors with wrinkled finish with different levels of texture. Only when customization through stickers, pad printing or serigraphy is provided, for technical reasons, their finish will be smooth matte or smooth glossy, depending on the technical feasibility.

We also offer the exclusive SABLÈ' colours, with a peculiar metallic wrinkled texture.

Upon request, different treatments and customizations are available, such as powder coating with non-standard RAL colors, and/or with smooth matte and smooth glossy finishes, and/or anti-graffiti treatment.

If required, the powder coating process can be certified Quality Steel.

RAL



SABLÈ



metalco.it
info@metalco.it



The mentioned RAL and SABLÈ colours should be considered only illustrative.

RECONSTITUED STONES

Our PDM (Reconstituted Stones) is a mixture of concrete and aggregates that combines concrete resistance with natural stone elegance.

It is available in four options with white granite, with grey granite, with white marble, and with black marble.

Our products are normally provided with sandblasted finish and with brushed finish for the seating flat surfaces.

Upon request, if the product allows it, it is possible to perform polishing operations.

The finished products are treated with a revitalizing varnish and, if requested, anti-graffiti treatment can be applied.



WHITE GRANITE BRUSHED



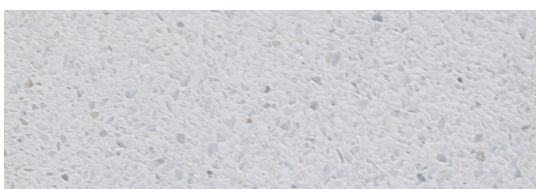
WHITE GRANITE SANDBLASTED



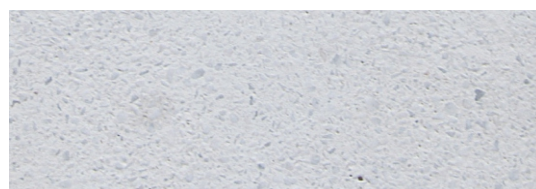
GREY GRANITE BRUSHED



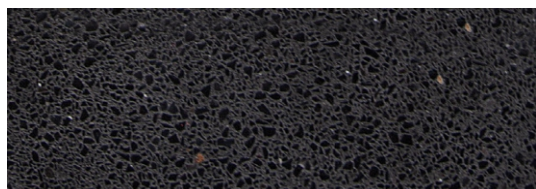
GREY GRANITE SANDBLASTED



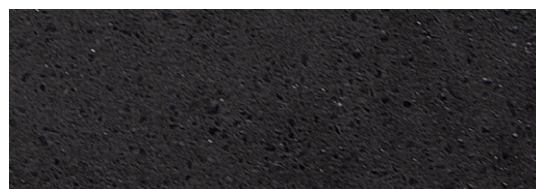
WHITE MARBLE BRUSHED



WHITE MARBLE SANDBLASTED



BLACK MARBLE BRUSHED



BLACK MARBLE SANDBLASTED

N.B.: Please note that the images reproduced on these pages are purely indicative. For more information about the materials, visit our website

metalco.it
info@metalco.it

