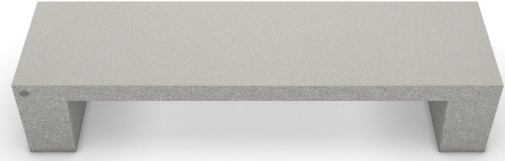


# Sarah



Flat bench, in PDM (Reconstituted Stones) cement with granite aggregates, polished top and sandblasted sides. The surface is treated with a protective varnish. On request it is possible to apply the anti-graffiti treatment. The available colors are white and gray.

---

**Variant code:** 0012920

---

**Size and weight:** Width 605mm  
Length 2200mm  
Weight 600kg  
Seat Height 450mm

---

**Materials:** PDM (Reconstituted Stones) granite

---

---

**Finishes:** Polished top, sandblasted sides

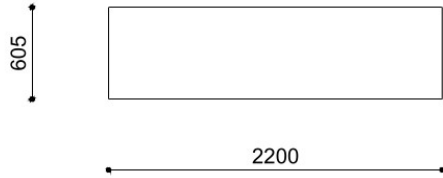
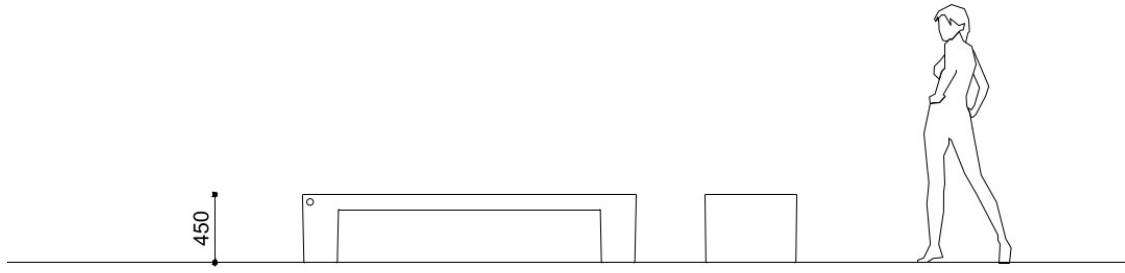
Color:  
Granite colour to be chosen between white and grey.

Finishes:

---

**Fixing:** Freestanding

Technical drawing:



metalco.it  
info@metalco.it



## RECONSTITUED STONES

---

Our PDM (Reconstituted Stones) is a mixture of concrete and aggregates that combines concrete resistance with natural stone elegance.

It is available in four options with white granite, with grey granite, with white marble, and with black marble.

Our products are normally provided with sandblasted finish and with brushed finish for the seating flat surfaces.

Upon request, if the product allows it, it is possible to perform polishing operations.

The finished products are treated with a revitalizing varnish and, if requested, anti-graffiti treatment can be applied.

---



WHITE GRANITE BRUSHED



WHITE GRANITE SANDBLASTED



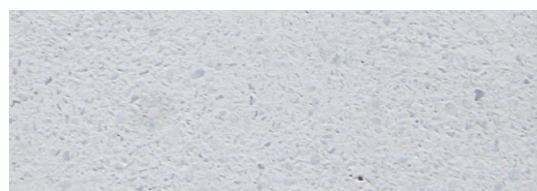
GREY GRANITE BRUSHED



GREY GRANITE SANDBLASTED



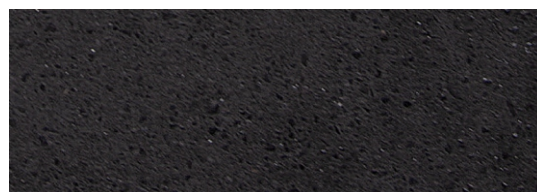
WHITE MARBLE BRUSHED



WHITE MARBLE SANDBLASTED



BLACK MARBLE BRUSHED



BLACK MARBLE SANDBLASTED

N.B.: Please note that the images reproduced on these pages are purely indicative.  
For more information about the materials, visit our website

metalco.it  
info@metalco.it

