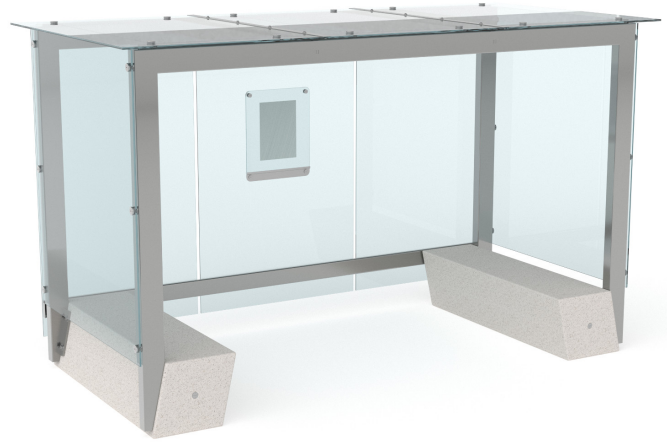


# Self



Self-supporting shelter composed of a bridge-shaped structure, in steel tube, which rests on two monoliths in PDM (Reconstituted Stones) granite, which serve both as base and as seat. The roof is composed of insulated or laminated and tempered glass sheets. The side and back walls are made of tempered glass. The glass sheets can be equipped with holes for the installation of an additional display board.

---

**Variant code:** 0104150

---

**Size and weight:** Width 3885mm  
Length 1915mm  
Height 2340mm

---

**Materials:** PDM (Reconstituted Stones) granite

Steel treated with protective coating and powder coating

Glass

---

**Finishes:** PDM: Polished seat and sandblasted sides

Polyester powder coated steel in wrinkled finish  
+  
Glass

Color:  
Granite colour to be chosen between white and grey;

Steel: to be chosen from Metalco standard colour range

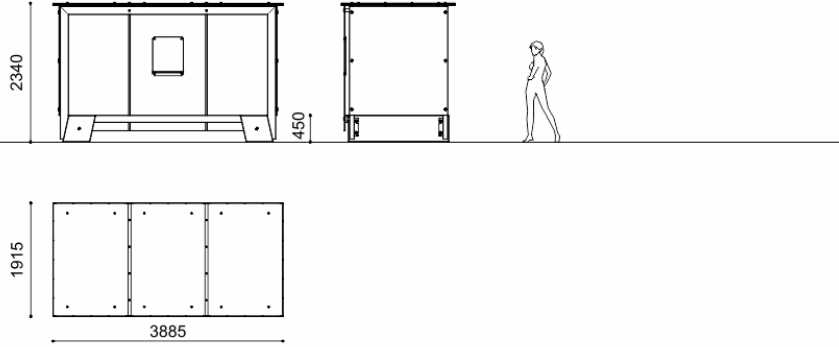
Finishes:

---

**Fixing:** Installation with threaded bars

---

Technical drawing:



metalco.it  
info@metalco.it



# POWDER COATED STEEL - POWDER COATED ALUMINUM

For every steel product and component, we choose the most suitable raw materials and treatments based on our production cycle and the needs of each design.

Our steel treatments include hot-dip galvanization, cold galvanizing, Sendzimir galvanization, cataphoresis and primer coating.

For our aluminum products and components, we use aluminum in sheet or in extrusion or in casting.

Then we powder coat steel, stainless steel, and aluminum with polyester powder, in accordance with EN ISO 12944-2.

We offer a wide range of standard RAL colors with wrinkled finish with different levels of texture. Only when customization through stickers, pad printing or serigraphy is provided, for technical reasons, their finish will be smooth matte or smooth glossy, depending on the technical feasibility.

We also offer the exclusive SABLÈ' colours, with a peculiar metallic wrinkled texture.

Upon request, different treatments and customizations are available, such as powder coating with non-standard RAL colors, and/or with smooth matte and smooth glossy finishes, and/or anti-graffiti treatment.

If required, the powder coating process can be certified Quality Steel.

## RAL



## SABLÈ



metalco.it  
info@metalco.it



The mentioned RAL and SABLÈ colours should be considered only illustrative.

## RECONSTITUED STONES

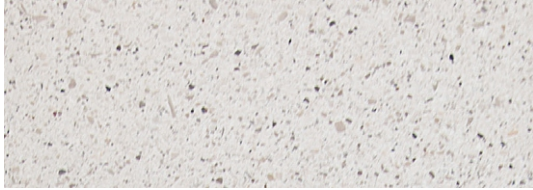
Our PDM (Reconstituted Stones) is a mixture of concrete and aggregates that combines concrete resistance with natural stone elegance.

It is available in four options with white granite, with grey granite, with white marble, and with black marble.

Our products are normally provided with sandblasted finish and with brushed finish for the seating flat surfaces.

Upon request, if the product allows it, it is possible to perform polishing operations.

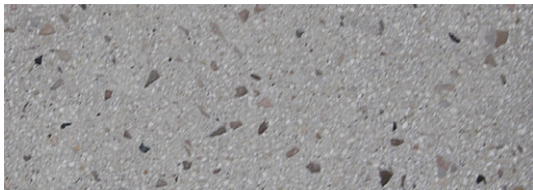
The finished products are treated with a revitalizing varnish and, if requested, anti-graffiti treatment can be applied.



WHITE GRANITE BRUSHED



WHITE GRANITE SANDBLASTED



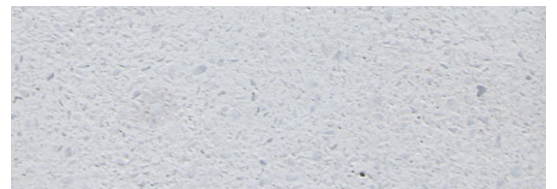
GREY GRANITE BRUSHED



GREY GRANITE SANDBLASTED



WHITE MARBLE BRUSHED



WHITE MARBLE SANDBLASTED



BLACK MARBLE BRUSHED



BLACK MARBLE SANDBLASTED

N.B.: Please note that the images reproduced on these pages are purely indicative.  
For more information about the materials, visit our website

metalco.it  
info@metalco.it

