

Tree Line



Collection of monolithic and modular seats made of PDM (Reconstituted Stone). Available in various linear and curved models. The curved module features a flat hardwood seat on the outer side. Can be combined with the LORENZ and TREE WIRE collections.



metalco.it
info@metalco.it



Tree Line C-120



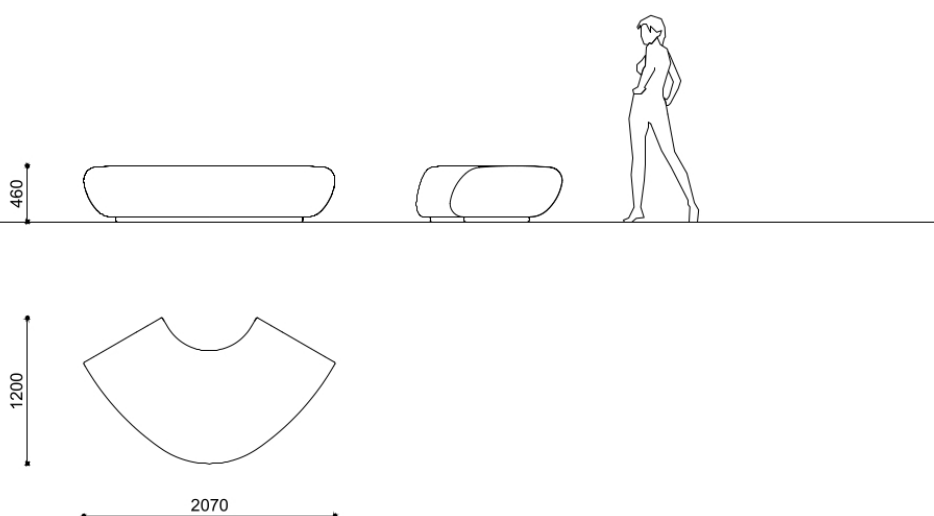
Single-seater flat curved seat in sandblasted granite PDM (Reconstituted Stones). Each element is equipped with reinforced bushings for lifting. The surface is protected by special matt satin paints.

Variant code: 0019130

Size and weight: Width 1200mm
Length 2070mm
Weight 1488kg
Seat Height 460mm
Internal Radius 448mm

Materials: PDM (Reconstituted Stones)

Technical drawing:

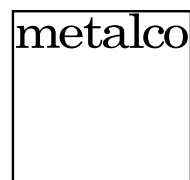


Finishes: Sandblasted

Color:
Granite colour to be chosen between white and grey.

Fixing: Freestanding

metalco.it
info@metalco.it



RECONSTITUED STONES

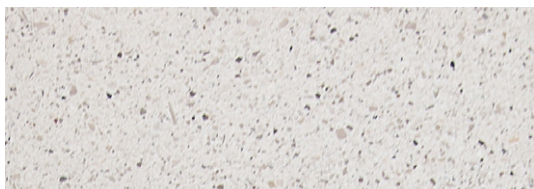
Our PDM (Reconstituted Stones) is a mixture of concrete and aggregates that combines concrete resistance with natural stone elegance.

It is available in four options with white granite, with grey granite, with white marble, and with black marble.

Our products are normally provided with sandblasted finish and with brushed finish for the seating flat surfaces.

Upon request, if the product allows it, it is possible to perform polishing operations.

The finished products are treated with a revitalizing varnish and, if requested, anti-graffiti treatment can be applied.



WHITE GRANITE BRUSHED



WHITE GRANITE SANDBLASTED



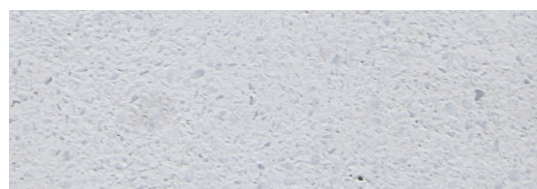
GREY GRANITE BRUSHED



GREY GRANITE SANDBLASTED



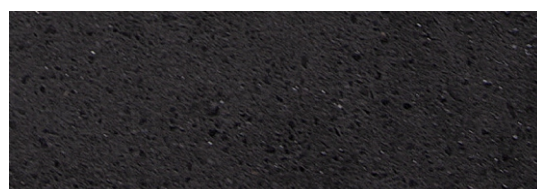
WHITE MARBLE BRUSHED



WHITE MARBLE SANDBLASTED



BLACK MARBLE BRUSHED



BLACK MARBLE SANDBLASTED

N.B.: Please note that the images reproduced on these pages are purely indicative. For more information about the materials, visit our website

metalco.it
info@metalco.it

