

# Norman



Round seat in HPC (High Performance Concrete) velluto - natural smooth, partially emptied inside.

**Variant code:** 0073161

**Size and weight:**  
Height 845mm  
Weight 686kg  
Diameter 1200mm  
Seat Height 470mm

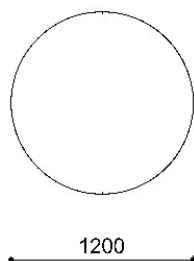
**Materials:** HPC (High Performance Concrete)

**Technical drawing:**

**Finishes:** HPC (High Performance Concrete) velluto - natural smooth

**Color:**  
HPC colour to be chosen between grey, white and dark grey.

**Fixing:** Freestanding



metalco.it  
info@metalco.it



metalco



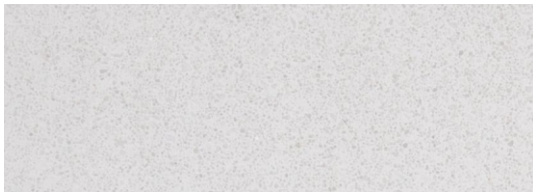
## HPC (HIGH PERFORMANCE CONCRETE)

Our HPC is available in five different colors (white, grey, dark grey, green and yellow) and it is provided, as standard, with VELLUTO – natural smooth finish.

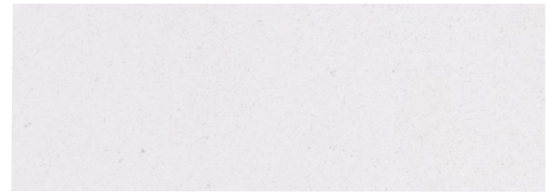
Characterized by textured appearance, HPC can present not uniform cloudy effects of color and light cracks, which are physiological aspects of this material.

Upon request, when technically feasible, it is possible to perform polishing operations.

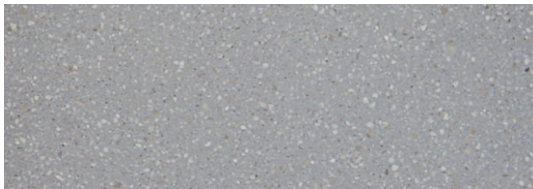
The finished products are treated with a protective varnish, and upon request, anti-graffiti treatment can be also applied.



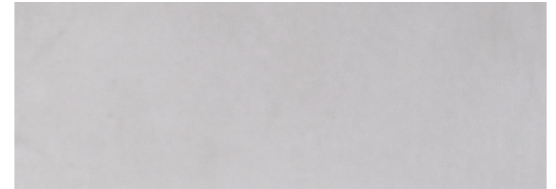
WHITE POLISHED



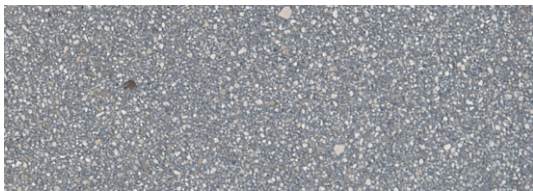
WHITE VELLUTO - NATURAL SMOOTH



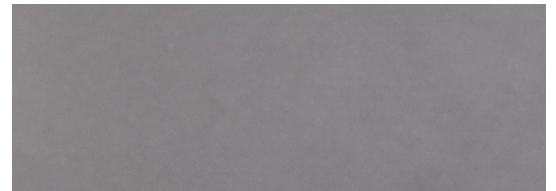
GREY POLISHED



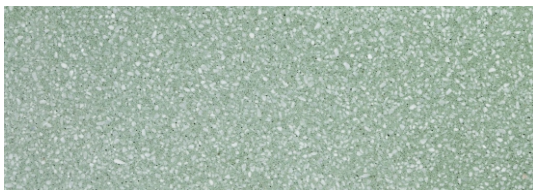
GREY VELLUTO - NATURAL SMOOTH



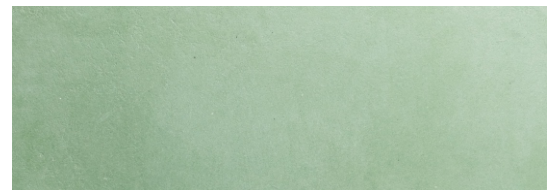
DARK GREY POLISHED



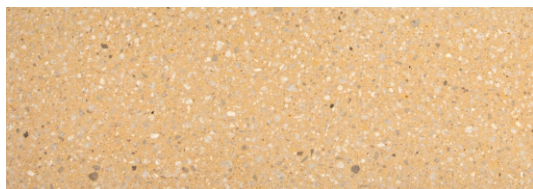
DARK GREY VELLUTO - NATURAL SMOOTH



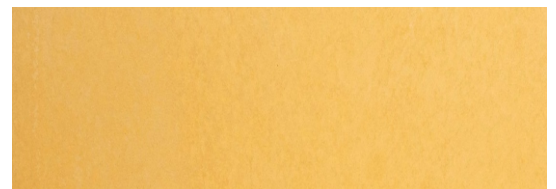
GREEN POLISHED



GREEN - NATURAL SMOOTH



YELLOW POLISHED



YELLOW VELLUTO - NATURAL SMOOTH

N.B.: Please note that the images reproduced on these pages are purely indicative. For more information about the materials, visit our website

metalco.it  
info@metalco.it

