

Zaffiro



Collection of spherical pedestrian bollards with flat cap, made of PDM (Reconstituted Stones) granite, brushed top and sandblasted sides, and equipped with stainless steel support base. The sphere can be positioned in three different positions.

Variant code: 0212200

Size and weight: Weight 157kg
Diameter 500mm

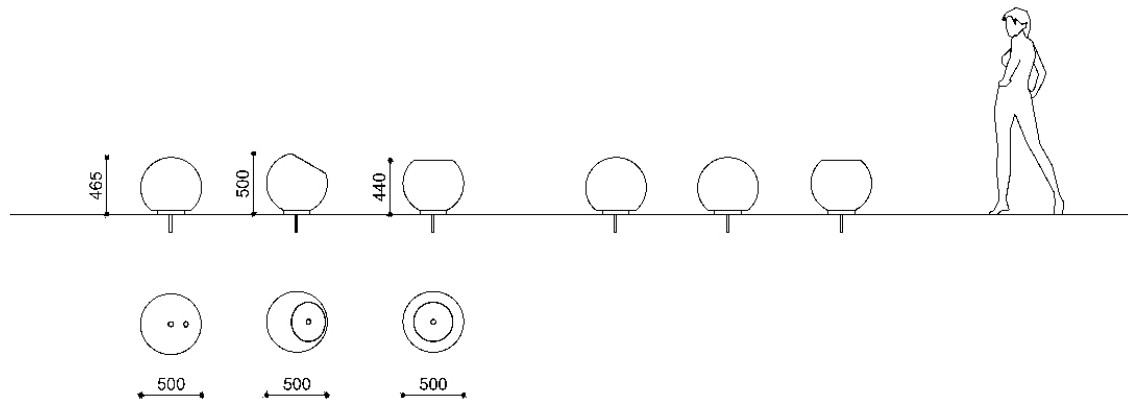
Materials: PDM (Reconstituted Stones) granite

Finishes: PDM (Reconstituted Stones) granite brushed top and sandblasted sides

Color:
Granite colour to be chosen between white and grey.

Fixing: Below ground installation

Technical drawing:



metalco.it
info@metalco.it



RECONSTITUED STONES

Our PDM (Reconstituted Stones) is a mixture of concrete and aggregates that combines concrete resistance with natural stone elegance.

It is available in four options with white granite, with grey granite, with white marble, and with black marble.

Our products are normally provided with sandblasted finish and with brushed finish for the seating flat surfaces.

Upon request, if the product allows it, it is possible to perform polishing operations.

The finished products are treated with a revitalizing varnish and, if requested, anti-graffiti treatment can be applied.



WHITE GRANITE BRUSHED



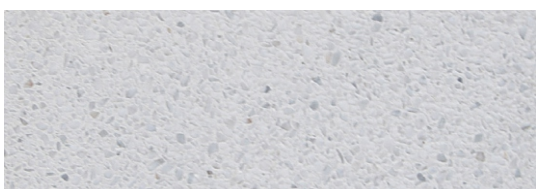
WHITE GRANITE SANDBLASTED



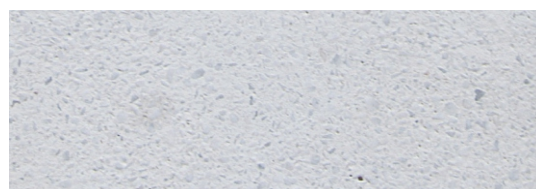
GREY GRANITE BRUSHED



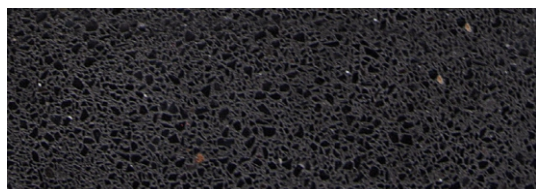
GREY GRANITE SANDBLASTED



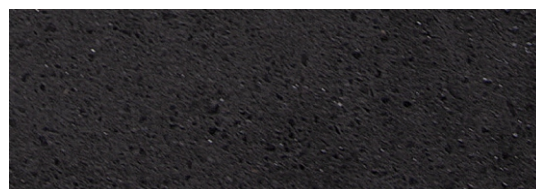
WHITE MARBLE BRUSHED



WHITE MARBLE SANDBLASTED



BLACK MARBLE BRUSHED



BLACK MARBLE SANDBLASTED

N.B.: Please note that the images reproduced on these pages are purely indicative. For more information about the materials, visit our website

metalco.it
info@metalco.it

