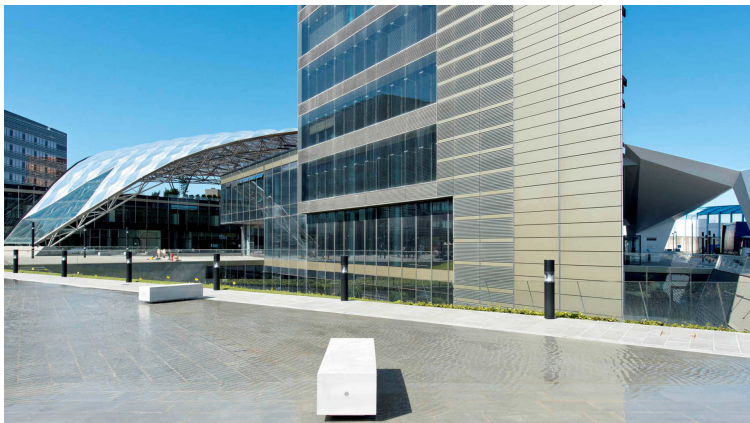


I-Box Collection



Essential and sculptural, the monolithic seats in this collection are made of lightweight HPC (High Performance Concrete), combining structural strength with contemporary design. Modular and backless, they feature a recessed base for easier ground maintenance and adapt seamlessly to urban spaces, allowing for both freeform and linear compositions.



metalco.it
info@metalco.it



I-Box 1200



I-BOX 1200 bench L=1200 in HPC velluto (colour to be specified)

Variant code: mpan00301

Size and weight: Width 60mm
Length 1200mm
Seat Height 440mm

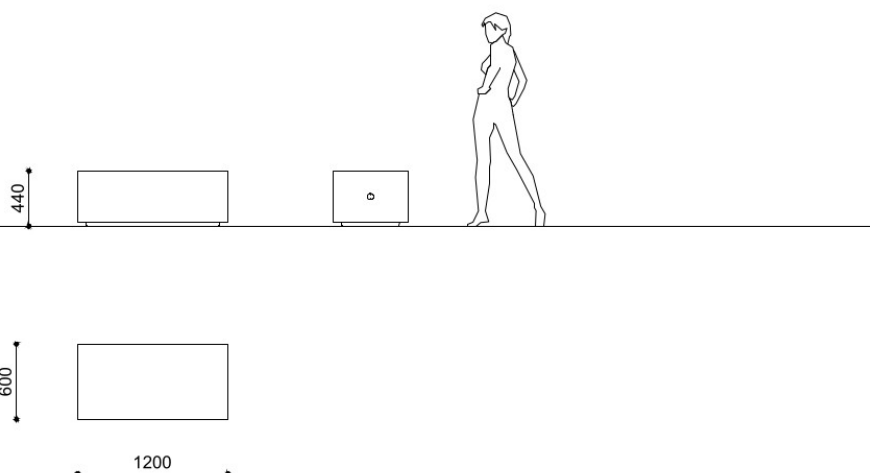
Materials: HPC (High Performance Concrete)

Finishes: HPC (High Performance Concrete) velluto - natural smooth

Color:
HPC colour to be chosen between grey, white and dark grey.

Fixing: Freestanding

Technical drawing:



metalco.it
info@metalco.it



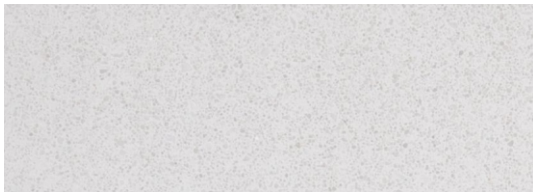
HPC (HIGH PERFORMANCE CONCRETE)

Our HPC is available in five different colors (white, grey, dark grey, green and yellow) and it is provided, as standard, with VELLUTO – natural smooth finish.

Characterized by textured appearance, HPC can present not uniform cloudy effects of color and light cracks, which are physiological aspects of this material.

Upon request, when technically feasible, it is possible to perform polishing operations.

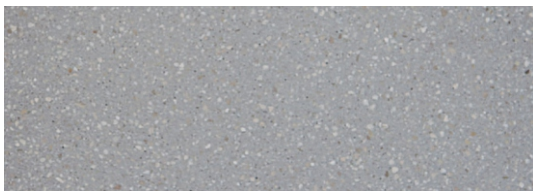
The finished products are treated with a protective varnish, and upon request, anti-graffiti treatment can be also applied.



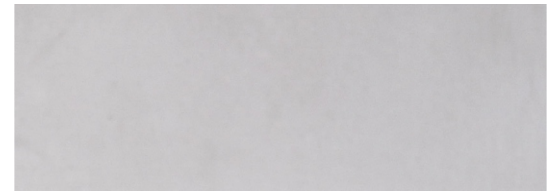
WHITE POLISHED



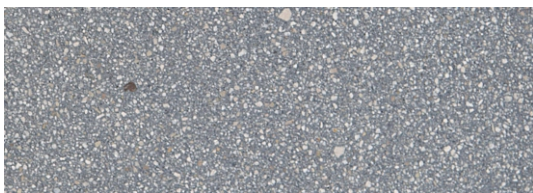
WHITE VELLUTO - NATURAL SMOOTH



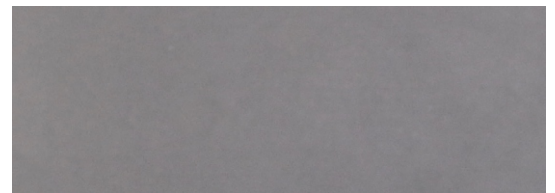
GREY POLISHED



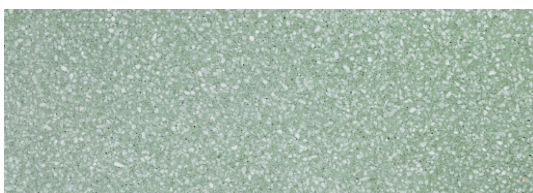
GREY VELLUTO - NATURAL SMOOTH



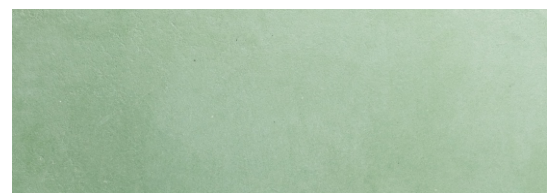
DARK GREY POLISHED



DARK GREY VELLUTO - NATURAL SMOOTH



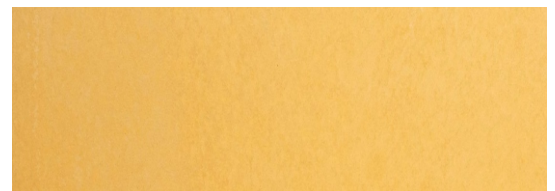
GREEN POLISHED



GREEN - NATURAL SMOOTH



YELLOW POLISHED



YELLOW VELLUTO - NATURAL SMOOTH

N.B.: Please note that the images reproduced on these pages are purely indicative. For more information about the materials, visit our website

metalco.it
info@metalco.it

