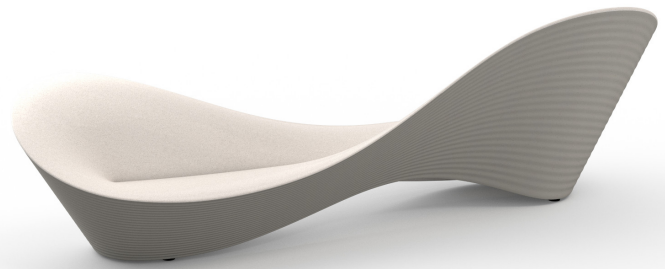


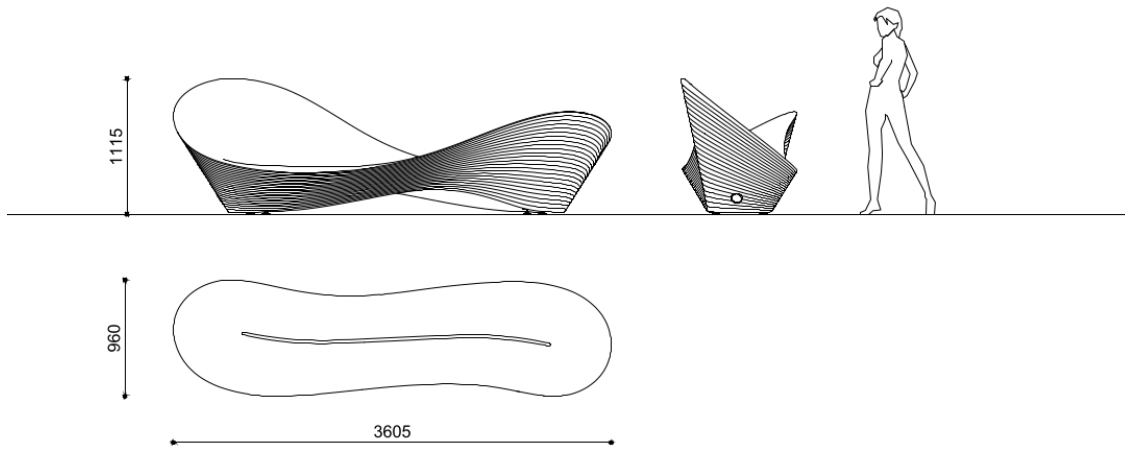
Folly



Folly bench, made entirely of HPC (High Performance Concrete) white velluto - natural smooth, is characterised by a ribbon shape with backrests at different heights. The outer surface has raised waves that follow the profile of the bench and are in velluto - natural smooth finish. The monolithic element is supported on the floor by means of four adjustable feet hidden from view to ensure correct positioning even on flooring that is not perfectly horizontal, or it can be fixed to the floor by means of threaded rods.

Variant code:	000100096	Finishes:	HPC (High Performance Concrete) velluto - natural smooth
Size and weight:	Width 960mm Length 3605mm Height 1115mm Weight 1500kg	Color:	HPC white
Materials:	HPC (High Performance Concrete)	Fixing:	Free standing with pedestals or Installation with threaded bars

Technical drawing:



metalco.it
info@metalco.it



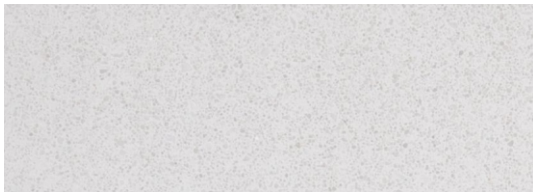
HPC (HIGH PERFORMANCE CONCRETE)

Our HPC is available in five different colors (white, grey, dark grey, green and yellow) and it is provided, as standard, with VELLUTO – natural smooth finish.

Characterized by textured appearance, HPC can present not uniform cloudy effects of color and light cracks, which are physiological aspects of this material.

Upon request, when technically feasible, it is possible to perform polishing operations.

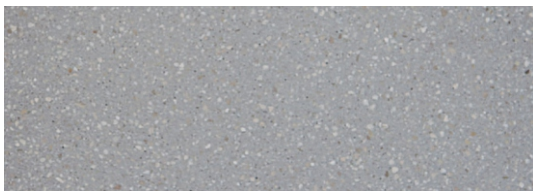
The finished products are treated with a protective varnish, and upon request, anti-graffiti treatment can be also applied.



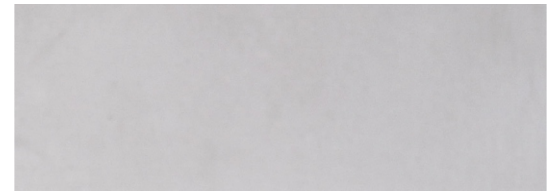
WHITE POLISHED



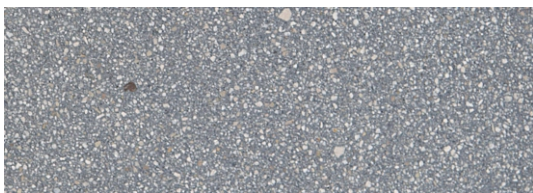
WHITE VELLUTO - NATURAL SMOOTH



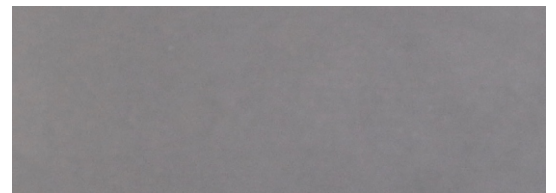
GREY POLISHED



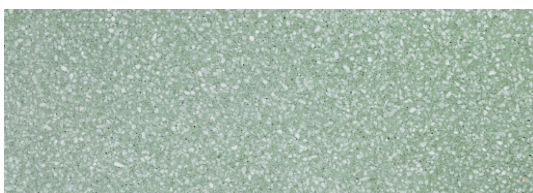
GREY VELLUTO - NATURAL SMOOTH



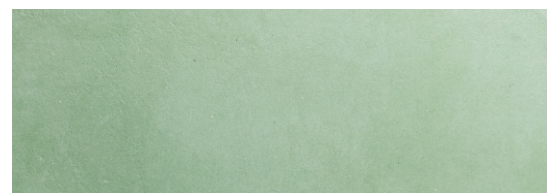
DARK GREY POLISHED



DARK GREY VELLUTO - NATURAL SMOOTH



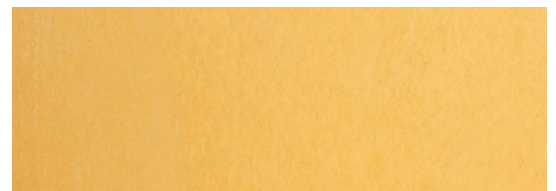
GREEN POLISHED



GREEN - NATURAL SMOOTH



YELLOW POLISHED



YELLOW VELLUTO - NATURAL SMOOTH

N.B.: Please note that the images reproduced on these pages are purely indicative. For more information about the materials, visit our website

metalco.it
info@metalco.it

