

Ambra



Cantilevered monolithic bench in PDM (Reconstituted Stones) granite.

Variant code: 0014880

Size and weight: Width 1350mm
Length 450mm
Weight 327kg

Materials: PDM (Reconstituted Stones) granite

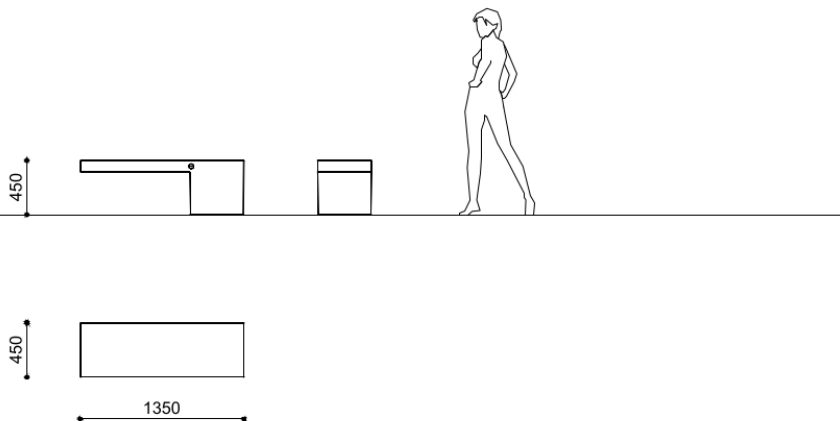
Finishes: brushed top and sandblasted sides

Color:
Granite colour to be chosen between white and grey

Fixing: Installation with threaded bars

Accessories: Extra per levigatura superiore

Technical drawing:



metalco.it
info@metalco.it



RECONSTITUED STONES

Our PDM (Reconstituted Stones) is a mixture of concrete and aggregates that combines concrete resistance with natural stone elegance.

It is available in four options with white granite, with grey granite, with white marble, and with black marble.

Our products are normally provided with sandblasted finish and with brushed finish for the seating flat surfaces.

Upon request, if the product allows it, it is possible to perform polishing operations.

The finished products are treated with a revitalizing varnish and, if requested, anti-graffiti treatment can be applied.



WHITE GRANITE BRUSHED



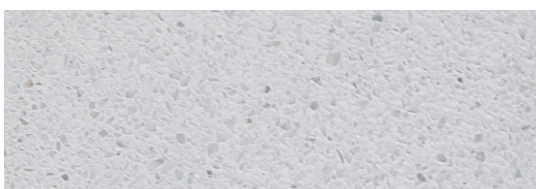
WHITE GRANITE SANDBLASTED



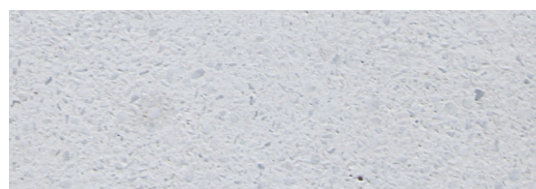
GREY GRANITE BRUSHED



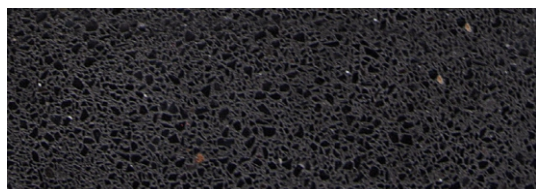
GREY GRANITE SANDBLASTED



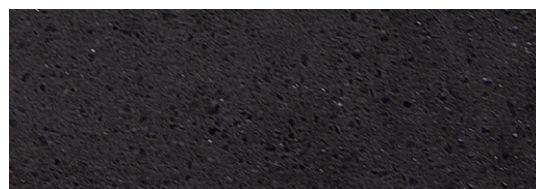
WHITE MARBLE BRUSHED



WHITE MARBLE SANDBLASTED



BLACK MARBLE BRUSHED



BLACK MARBLE SANDBLASTED

N.B.: Please note that the images reproduced on these pages are purely indicative. For more information about the materials, visit our website

metalco.it
info@metalco.it

