

# Balzac F



Planters shaped as inverted bell made of PDM (Reconstituted Stones) with granite aggregates. It is equipped with an adjustable support base.

**Variant code:** 0301370

**Size and weight:** Height 450mm  
Weight 560kg  
Diameter 1500mm

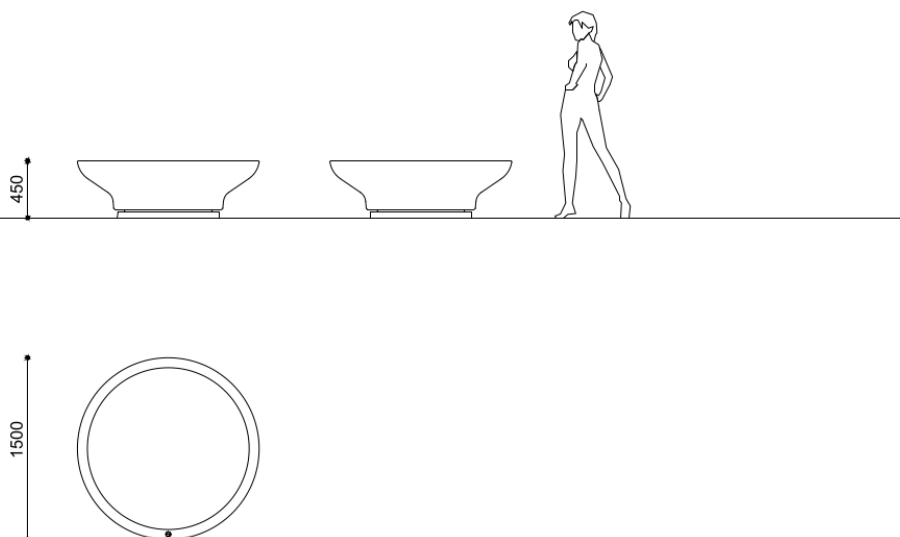
**Materials:** PDM (Reconstituted Stones)

**Finishes:** Sandblasted

**Color:**  
Granite colour to be chosen between white and grey.

**Fixing:** Freestanding or Installation with threaded bar

## Technical drawing:



metalco.it  
info@metalco.it



## RECONSTITUED STONES

Our PDM (Reconstituted Stones) is a mixture of concrete and aggregates that combines concrete resistance with natural stone elegance.

It is available in four options with white granite, with grey granite, with white marble, and with black marble.

Our products are normally provided with sandblasted finish and with brushed finish for the seating flat surfaces.

Upon request, if the product allows it, it is possible to perform polishing operations.

The finished products are treated with a revitalizing varnish and, if requested, anti-graffiti treatment can be applied.



WHITE GRANITE BRUSHED



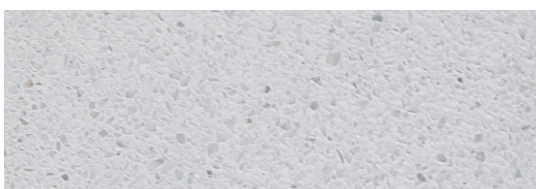
WHITE GRANITE SANDBLASTED



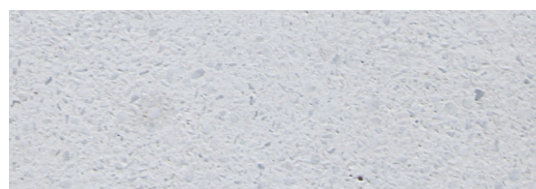
GREY GRANITE BRUSHED



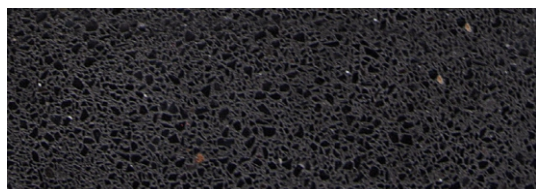
GREY GRANITE SANDBLASTED



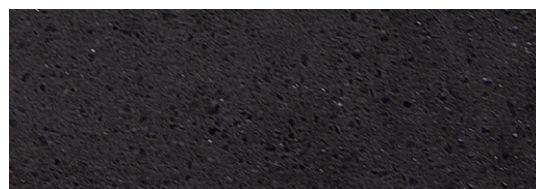
WHITE MARBLE BRUSHED



WHITE MARBLE SANDBLASTED



BLACK MARBLE BRUSHED



BLACK MARBLE SANDBLASTED

N.B.: Please note that the images reproduced on these pages are purely indicative. For more information about the materials, visit our website

metalco.it  
info@metalco.it

