

Cann



Monolithic cantilevered bench in PDM (Reconstituted Stones) granite, with recess at the base.

Variant code: 0071170

Size and weight: Width 2270mm
Length 751mm
Height 430mm
Weight 660kg

Materials: PDM (Reconstituted Stones) granite

Stainless steel

Finishes: brushed top sandblasted sides

Brushed stainless steel

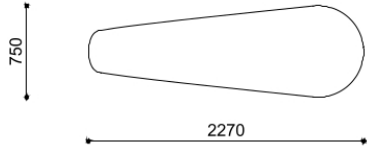
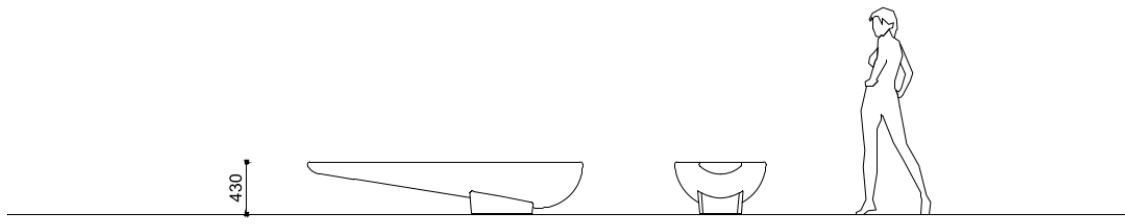
Color:
Granite colour to be chosen between white
and grey

Finishes:

Fixing: Installation with threaded bars

Accessories: CANN illuminazione LED, CANN rivestimento
base in acciaio inox, Extra per levigatura
superiore CANN

Technical drawing:



metalco.it
info@metalco.it



STAINLESS STEEL

For our stainless steel products and components, we normally use AISI 304 or 304L stainless steel, but in case of installation in highly aggressive conditions we recommend requesting AISI 316 stainless steel.

Our stainless steel is usually brushed or shotblasted, depending on the technical features of the product.

Electropolishing treatment is also available, upon request.



BRUSHED



SHOTBLASTED



RECONSTITUED STONES

Our PDM (Reconstituted Stones) is a mixture of concrete and aggregates that combines concrete resistance with natural stone elegance.

It is available in four options with white granite, with grey granite, with white marble, and with black marble.

Our products are normally provided with sandblasted finish and with brushed finish for the seating flat surfaces.

Upon request, if the product allows it, it is possible to perform polishing operations.

The finished products are treated with a revitalizing varnish and, if requested, anti-graffiti treatment can be applied.



WHITE GRANITE BRUSHED



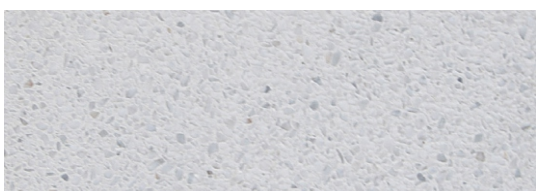
WHITE GRANITE SANDBLASTED



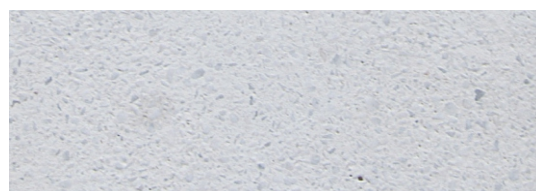
GREY GRANITE BRUSHED



GREY GRANITE SANDBLASTED



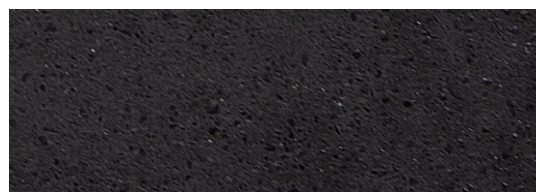
WHITE MARBLE BRUSHED



WHITE MARBLE SANDBLASTED



BLACK MARBLE BRUSHED



BLACK MARBLE SANDBLASTED

N.B.: Please note that the images reproduced on these pages are purely indicative.
For more information about the materials, visit our website

metalco.it
info@metalco.it

